

The Pearls

H I G H Q U A L I T Y N A T U R A L H A I R



The Pearls



HUMAN HAIR WIGS / HALF WIGS / TOPPERS



The Pearls

Wig

Akoya



HUMAN HAIR WIGS

The Pearls

Wig

Akoya

Base details :

- ① mono + diamond net
- ② lace front
- ③ wefts

Total length: up to 55 cm

Top layer: up to 45 cm

COLOURS:

R12/88/200

R8/12/14/26

8A/12

4/6

2/4



front view



back view



side view

The photographs are for illustrative purposes, hair styles might be slightly different when taken out of the box.



The Pearls

Wig

Biwa



HUMAN HAIR WIGS

The Pearls

Wig

Biwa

Base details :

- ① mono + diamond net
- ② lace front
- ③ wefts

Total length: up to 40 cm

Top layer: up to 35 cm

Colours:

12/14R+14/16ASH+16H

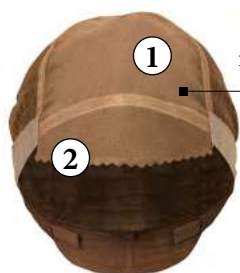
10/16+16ASH+16H

8/12+8/10/16H

6/33R+8/12H

2 + 6/8/30H

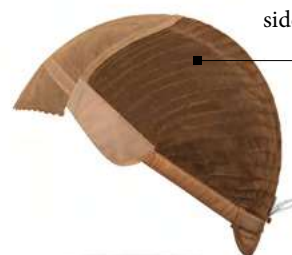
2R + 4/8/30



front view



back view



side view

The photographs are for illustrative purposes, hair styles might be slightly different when taken out of the box.



The Pearls

Wig

Keshi



HUMAN HAIR WIGS

The Pearls

Wig

Keshi

Base details :

- ① mono
- ② lace front
- ③ wefts

Total length: 44 cm

Top layer: up to 36 cm

COLOURS:

14+16ASH B

12+14R+14/16ASH+16H

12+14 /16ASH B

10/16+LP14+16ASH H

8/12+8/10/16H

2/4+6/8/H

2+6/8/30H



front view



back view



side view

The photographs are for illustrative purposes, hair styles might be slightly different when taken out of the box.



The Pearls

Topper

Melo



HUMAN HAIR TOPPERS

The Pearls

Topper

Melo

Base details :

- ① silk mono
- ② clips
- ③ wefts

Total length: up to 65 cm

Top layer: up to 60 cm

COLOURS:

14 + 16ASH B

12/14R + 14/16ASH + 16H

10/16 + LP14/16ASH H

8/12 + 8/10/16H

2/4 + 6/8H



The photographs are for illustrative purposes, hair styles might be slightly different when taken out of the box.



The Pearls

Wig

Mystic



HUMAN HAIR WIGS

The Pearls

Wig

Mystic

Base details :

- ① mono + diamond net
- ② lace front
- ③ wefts

Total length: up to 40 cm

Top layer: up to 35 cm

COLOURS:

R12/88/200

R8/12/14/26

8A/12

4/6

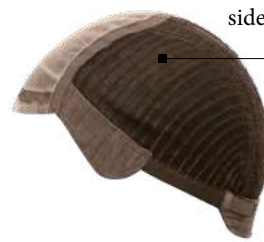
2/4



front view



back view



The photographs are for illustrative purposes, hair styles might be slightly different when taken out of the box.



The Pearls

Topper

Peach



HUMAN HAIR TOPPERS

The Pearls

Topper

Peach

Base details :

- ① mono
- ② clips

Total length: up to 30 cm
Top layer: up to 20 cm

COLOURS:

R12/88/200
R8/12/14/26
8A/12
4/6
2/4



The photographs are for illustrative purposes, hair styles might be slightly different when taken out of the box.



The Pearls

Half Wig

Tahiti



HUMAN HAIR HALF WIGS

The Pearls

Half Wig

Tahiti

Base details :

- ① mono
- ② lace front
- ③ clips
- ④ wefts

Total length: up to 50 cm

Top layer: up to 40 cm

COLOURS:

24R

12/14R + 14/16ASH + 16H

10/16R + 16H

10/16 + LP14/16ASH H

2/4+6/8H

2R + 4/8/30



front view



back view



side view

The photographs are for illustrative purposes, hair styles might be slightly different when taken out of the box.



The Pearls

Half Wig

Tear



HUMAN HAIR HALF WIGS

The Pearls

Half Wig

Tear

Base details :

- ① mono crown
- ② lace front
- ③ clips
- ④ wefts

Total length: up to 48 cm

Top layer: up to 36 cm

COLOURS:

14 + 16ASH B

12 + 14R + 14/16ASH + 16H

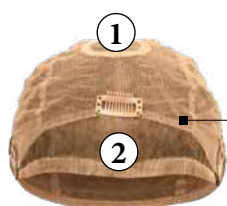
12 + 14/16ASH B

10/16 + LP14 + 16ASH H

8/12 + 8/10/16H

6/33R + 8/12H

2/4 + 6/8H



front view



back view



side view

The photographs are for illustrative purposes, hair styles might be slightly different when taken out of the box.



The Pearls

Wig

Vili



HUMAN HAIR WIGS

The Pearls

Wig

Vili

Base details:

- ① mono + diamond net
- ② lace front
- ③ wefts

Total length: up to 55 cm

Top layer: up to 35 cm

Colours:

10/16 + LP14/16ASH H

10/16R + 16H

2/4 + 6/8H

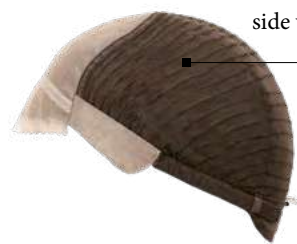
2R + 4/8/30



front view



back view



side view

The photographs are for illustrative purposes, hair styles might be slightly different when taken out of the box.