



*Hair* **2be**

QUALITY PRODUCT



#### **SYNTHETIC WIGS COLLECTION FOR BETTER LIFE**

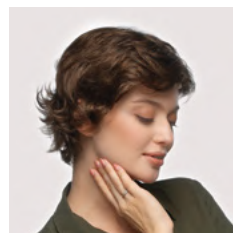
Secure your comfort and beautiful look during everyday life with one of our Hair2Be model. This collection of modernly designed synthetic wigs is our answer to every woman's need to look good and fresh every day. Our colour palette offers variety of 3D looking natural hair shades and gives you exactly what you're aiming for.

Hair2Be Collection will help you keep the comfort without any worries.

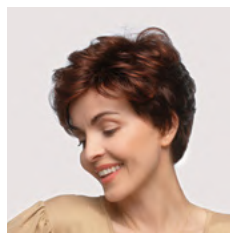
*Try it and love it!*



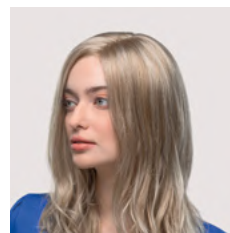
# Models



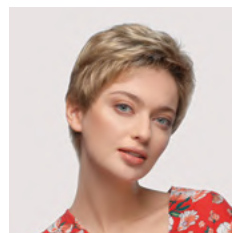
Alexandra \_\_\_\_\_ 6



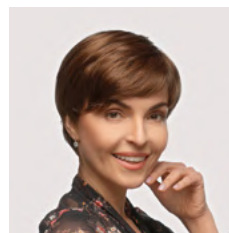
Amanda \_\_\_\_\_ 8



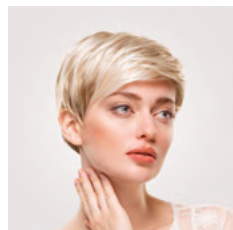
Ann \_\_\_\_\_ 10



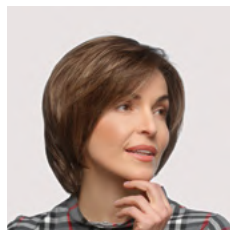
Annabel \_\_\_\_\_ 12



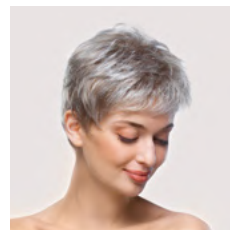
Anwan \_\_\_\_\_ 14



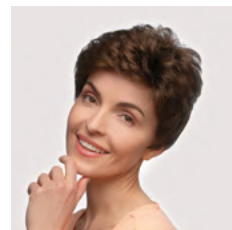
Aramita \_\_\_\_\_ 16



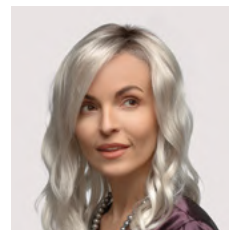
Aurora \_\_\_\_\_ 18



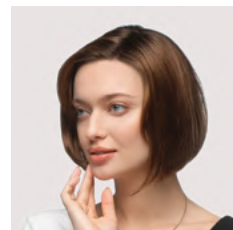
Brooke \_\_\_\_\_ 20



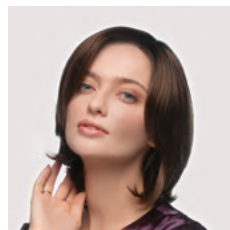
Camilla \_\_\_\_\_ 22



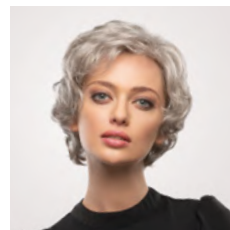
Carla \_\_\_\_\_ 24



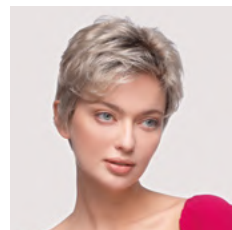
Catherina \_\_\_\_\_ 26



Catriona \_\_\_\_\_ 28



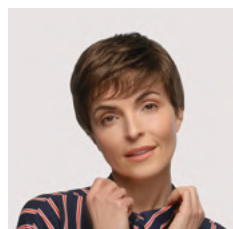
Chrisitna \_\_\_\_\_ 30



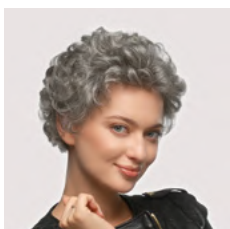
Cloe \_\_\_\_\_ 32



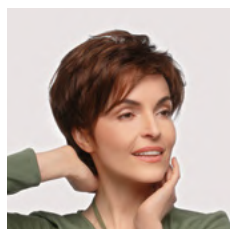
Cora \_\_\_\_\_ 34



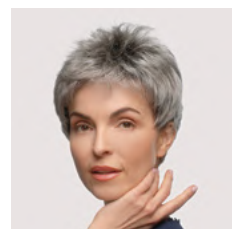
Cornelia \_\_\_\_\_ 36



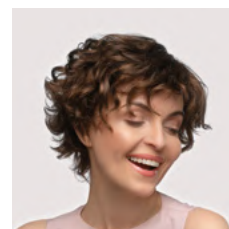
Danielle \_\_\_\_\_ 38



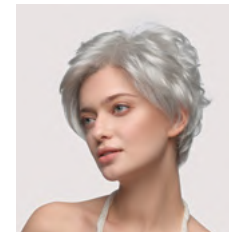
Emily \_\_\_\_\_ 40



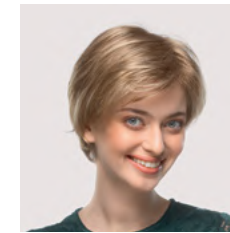
Evie \_\_\_\_\_ 42



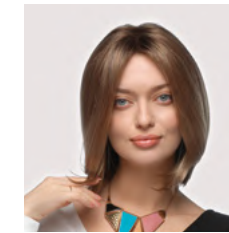
Frederica \_\_\_\_\_ 44



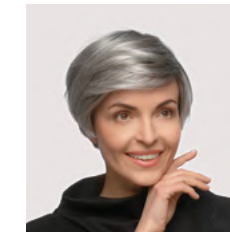
Gianna \_\_\_\_\_ 46



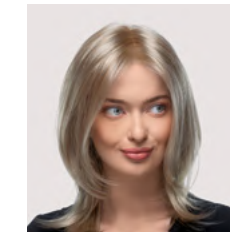
Gloria \_\_\_\_\_ 48



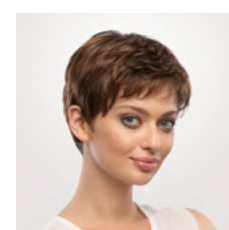
Gracie \_\_\_\_\_ 50



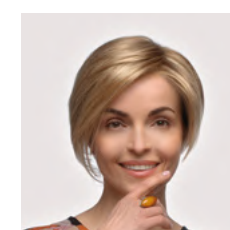
Jessamy \_\_\_\_\_ 52



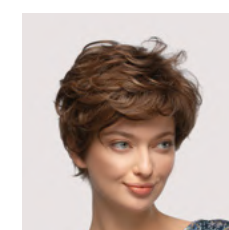
Kira \_\_\_\_\_ 54



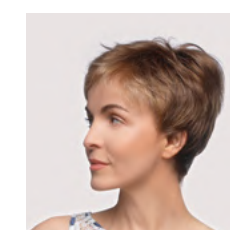
Lucy \_\_\_\_\_ 56



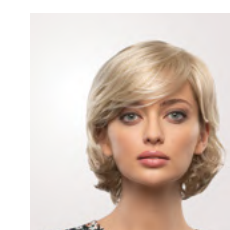
Maddi \_\_\_\_\_ 58



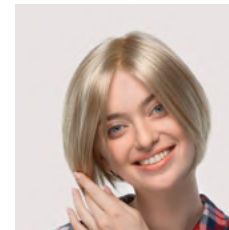
Michelle \_\_\_\_\_ 60



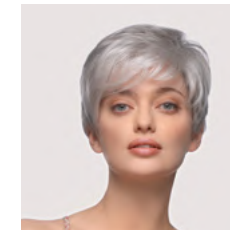
Millie \_\_\_\_\_ 62



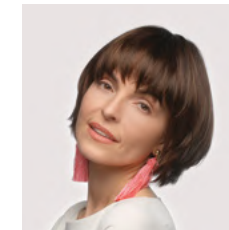
Montgomery \_\_\_\_\_ 64



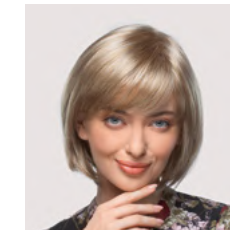
Olivia \_\_\_\_\_ 66



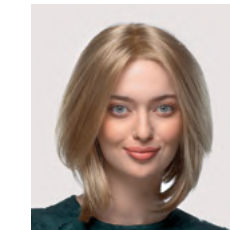
Patty \_\_\_\_\_ 68



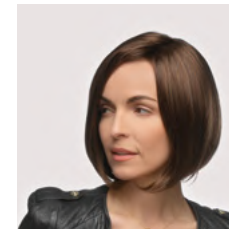
Philippa \_\_\_\_\_ 70



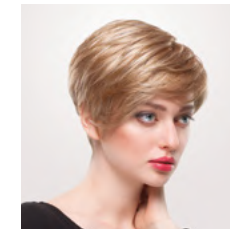
Polly \_\_\_\_\_ 72



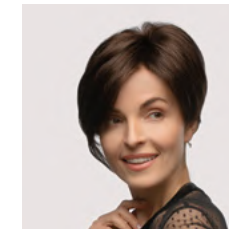
Silvia \_\_\_\_\_ 74



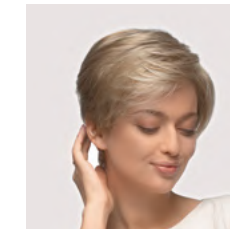
Tina \_\_\_\_\_ 76



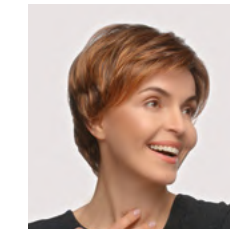
Valerie \_\_\_\_\_ 78



Wendy \_\_\_\_\_ 80



Yvette \_\_\_\_\_ 82



Yvonne \_\_\_\_\_ 84



Alexandra colours:

- 51
- 26/25/22
- 26/27/20
- 18/22/12
- 12/14/16
- 8/16/30R
- 8/12/10
- 4/6
- 27/30/31R
- 30/33
- 32/133**
- 131/137/4R

alexandra

Alexandra

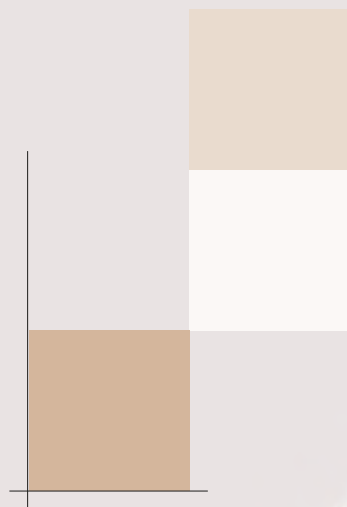
base:  
wefted





# Amanda

base:  
wefted



## Amanda colours:

- 59
- 51/56/60/1BR
- 101/24/38R
- 22/16
- 26/25/22/10R
- 26/27/20
- R14/88/8R
- 18/22/12/8R
- 5/14/4R
- 8/12/10
- 4/6
- R2
- 23N





Ann colours:

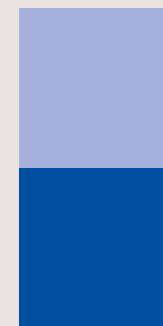
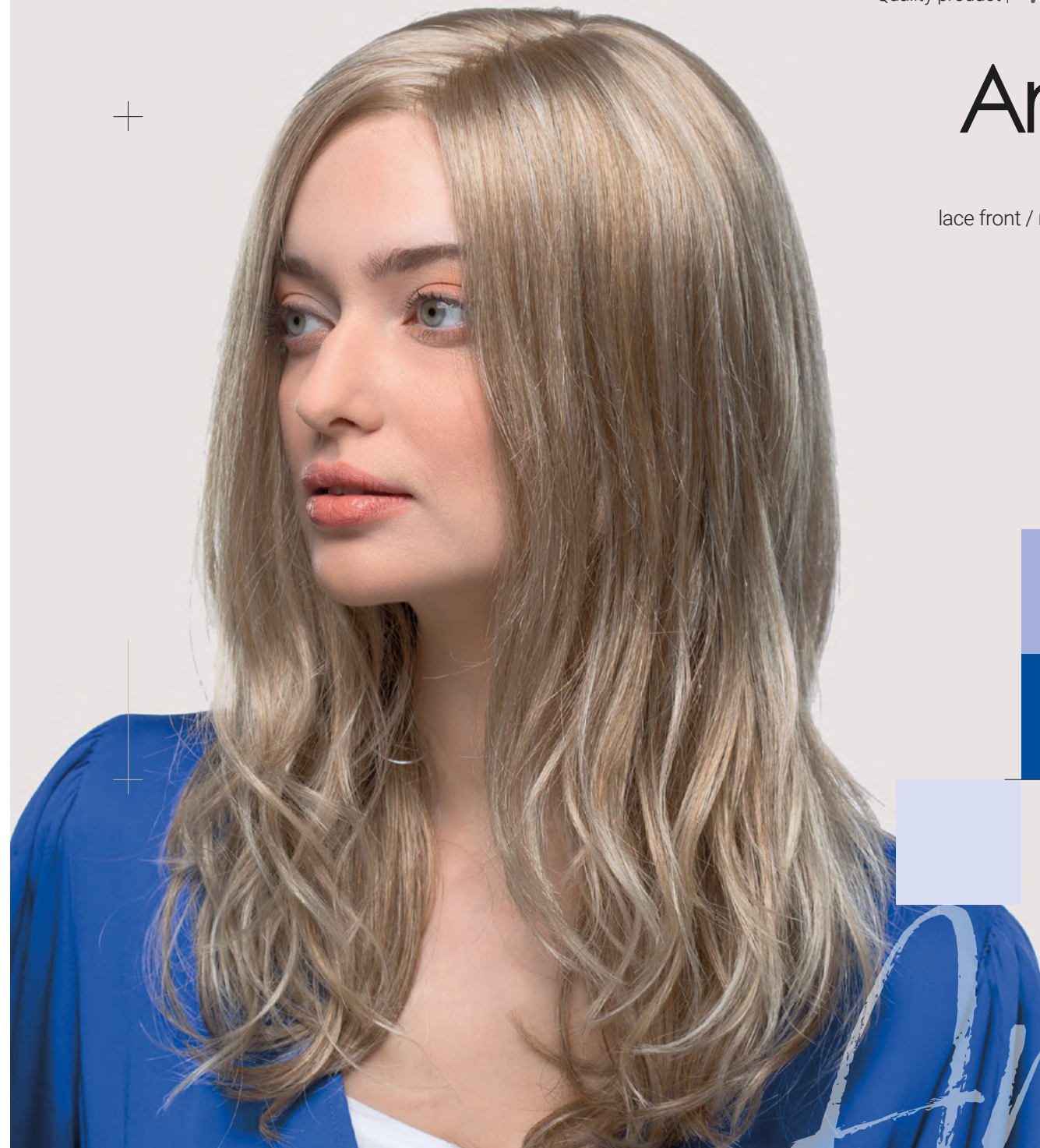
- 66/101/8R
- 26/25/22
- R14/88/8R
- 18/22/12
- 14/16/6R
- 8/12/10/6R
- R2
- 3/13/6R



ann

Ann

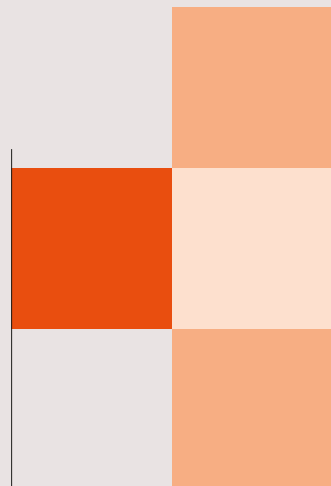
base:  
lace front / mono part





# Annabel

**base:**  
lace front / mono top



## Annabel colours:

- 61
- 26/27/19/8R
- 10/14/80
- 10/24/80/8R**
- 830/6/4
- 4/30/27/4R





Anwan colours:

- 101/60
- 24/25/23/12R
- 26/25/22/10R
- 18/24/22
- 5/14/4R
- 4/8
- 23N/28/30/30R

anwan

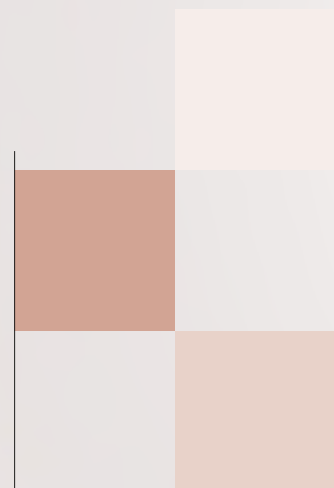
Anwan

base:  
mono crown



# Aramita

base:  
mono crown



Aramita colours:

- 26/25/22/10R
- 18/22/12/8R
- 22/16**
- 5/14/4R
- 4/6
- 1
- 130/31/4R





Aurora colours:

- 16/101/8R
- 26/27/19/8R
- 14/16
- 10/14/80
- 10/24/80/8R
- 8/14/6R
- 830/6/4



aurora

# Aurora

base:  
lace front / mono part

















# Brooke

**base:**  
lace front / mono crown



## Brooke colours:

	61		8/14/6R
	44/56/60		4/30/27/4R
	<b>101/60/14</b>		2
	16/101/8R		30/33
	26/27/19/8R		
	14/88		
	14/16		
	10/14/80/8R		



# brooke

**Camilla** colours:

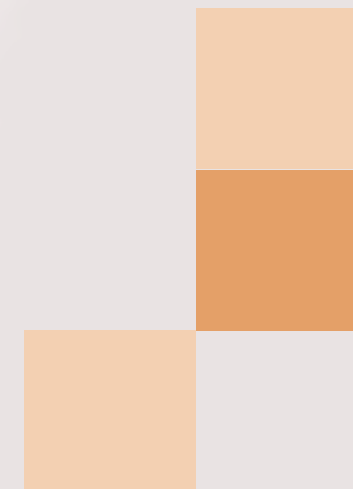
- 305K
- 24/25/23/12R
- 101/24/38R
- 18/22
- 8/16/30R
- 5/14/4R
- 8/27
- 4/30/6R
- 23N



camilla

# Camilla

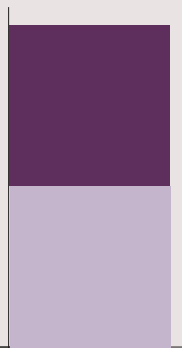
**base:**  
lace front











# Carla

**base:**  
lace front / mono part
















**Carla** colours:

-  **16/101/8R**
-  26/27/19/8R
-  10/14/80
-  10/24/80/8R
-  8/14/6R
-  4/33





Catherina colours:

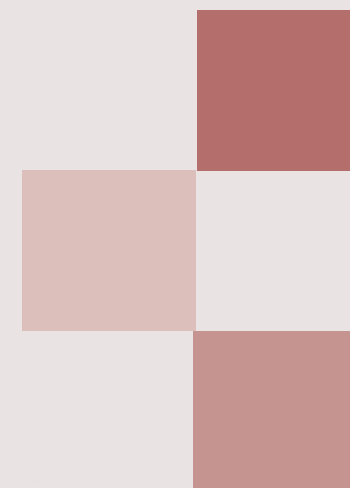
	24/25/23/12R		5/14/4R
	26/25/22		4/6
	18/22/12/8R		1
	18/22		23N/28/30/30R
	18/24/22		130/31/4R
	10/18/14		
	12/14/16		
	8/16/30R		



catherina

# Catherina

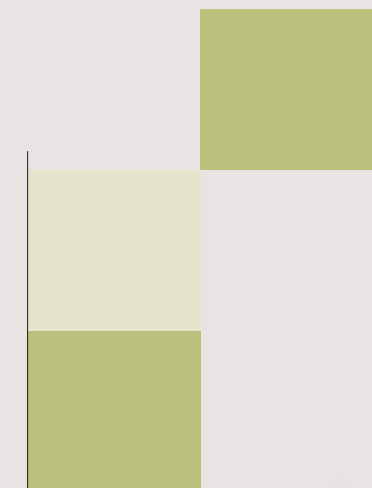
base:  
lace front / mono part











# Catriona

**base:**  
lace front / mono part



## Catriona colours:

-  24/25/23/12R
-  26/25/22
-  18/24/22/8R
-  8/12/10/6R
-  **6/8/4R**
-  130/31/4R





Chrisitna colours:

- 59
- 56
- 26/25/22
- 26/27/20
- 18/22/12
- 12/14/16
- 8/16/30R
- 8/12/10
- 4/6
- 4/30/6R
- 1



christina

# Chrisitna

base:  
wefted

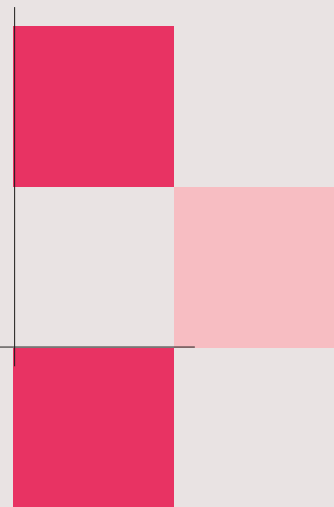


Chrisitna





















# Cloe

base:  
wefted



## Cloe colours:

	59		8/12/10
	56		4/8
	51		4/30/6R
	38/48/36R		130/31/4R
	<b>101/24/38R</b>		32/133
	26/25/22		30/33
	26/25/22/10R		
	26/27/20		
	18/22/12		
	14/12/22		
	12/14/16		
	8/16/30R		





**Cora** colours:

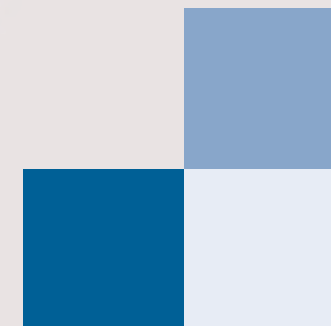
- 10/613/8R
- 14/88/8R
- 14/16/8R
- 10/24/80
- 12/26/19/6R
- 4/30/27/4R
- 830/28/30/4R
- 4/33



cora

Cora

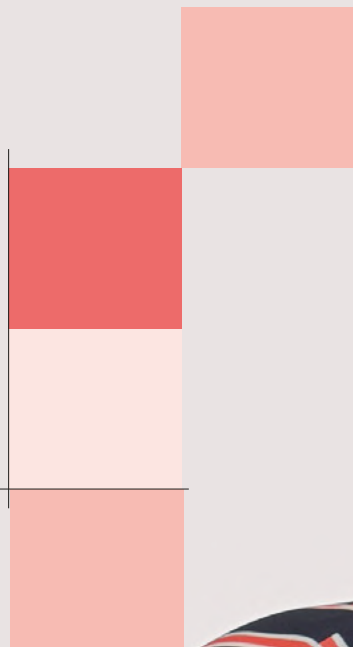
base:  
lace front





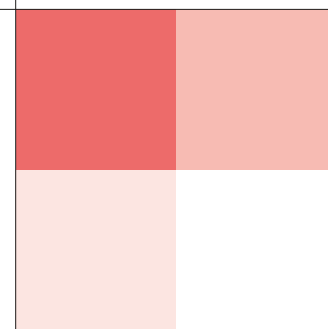
# Cornelia

base:  
mono crown



## Cornelia colours:

59	8/12/10
56	4/30/6R
24/25/23	4/6
26/25/22	33/830
18/22/12	130/31/4R
18/22/12/8R	
14/12/22	
8/16/30R	



# cornelia





Danielle colours:

- 56
- 51
- 305K
- 24/25/23/12R
- 101/24/38R
- 26/27/20
- 18/22
- 14/12/22
- 8/16/30R
- 4/6

danielle

Danielle

base:  
lace front



# Emily

base:  
lace front



## Emily colours:

- 61
- 101/60/14/8R
- 14/16
- 10/14/80/8R
- 4/30/27/4R
- 4/33
- 30/33



emily



Evie colours:

- 59
- 51/56/60/1BR
- 101/24/38R
- 26/27/20
- 22/16
- 18/22/12/8R
- 18/22
- 14/12/22
- 8/16/30R
- 8/12/10
- 4/6
- 130/31/4R
- 32/133



evie

Model Evie is a part of Hair2Be collection

Evie

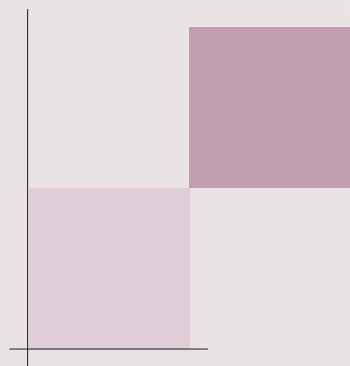
base:  
wefted





# Frederica

**base:**  
lace front / mono part



## Frederica colours:

- 14/88/8R
- 14/16
- 10/14/80/8R
- 12/26/19/6R
- 830/6/4
- 2





Gianna colours:

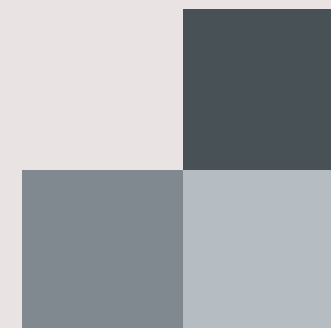
- 61
- 16/101/8R
- 14/88/8R
- 14/16
- 10/24/80
- 12/26/19/6R
- 830/6/4
- 4/33



gianna

Gianna

base:  
lace front





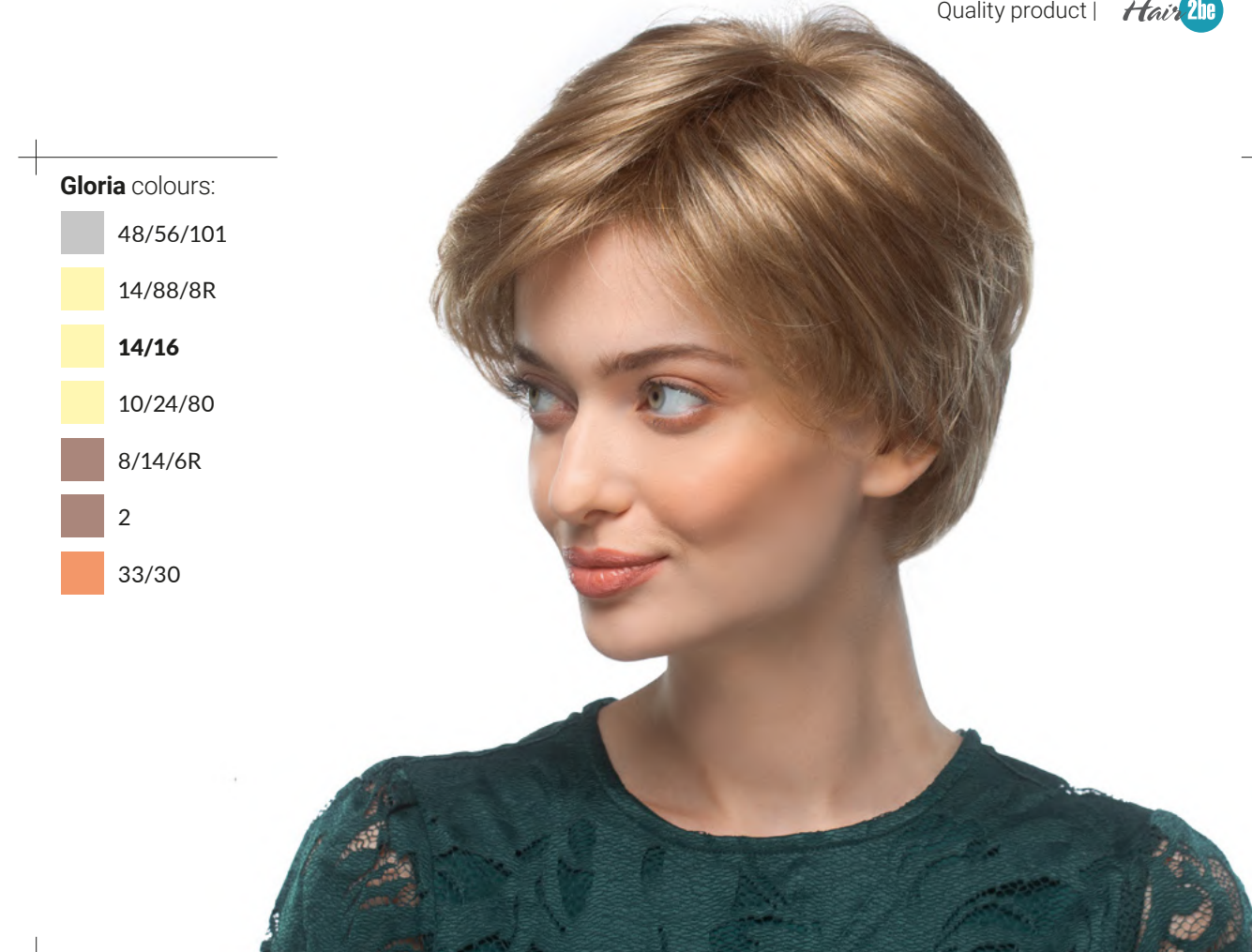
# Gloria

base:  
mono crown



## Gloria colours:

- 48/56/101
- 14/88/8R
- 14/16
- 10/24/80
- 8/14/6R
- 2
- 33/30





Gracie colours:

- 24/25/23/12R
- 26/25/22/10R
- 18/22/12/8R
- 8/16/30R**
- 5/14/4R
- 6/8



gracie

# Gracie

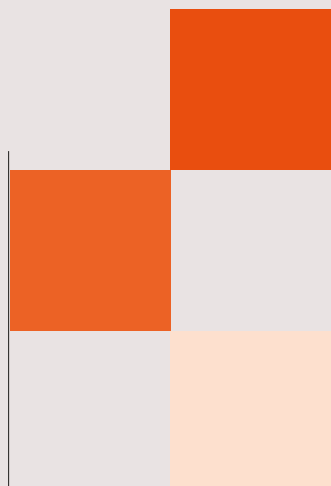
base:  
lace front / mono part





# Jessamy

base:  
wefted



## Jessamy colours:

- 51/56/60/1BR
- 24/25/23/12R
- 18/22/12/8R
- 8/16/30R
- 5/14/4R
- 23N/28/30/30R





**Kira** colours:

- 16/101/8R
- 14/88
- 10/24/80/8R
- 8/14/6R
- 2



kira

Kira

base:  
lace front / mono part





# Lucy

base:  
wefted

Model Lucy is a part of **Hair2Be** collection

## Lucy colours:

59	8/12/10
56	<b>5/14/4R</b>
51	4/30/6R
24/25/23/12R	4/8
26/25/22	23N
26/27/20	30/33
18/22/12	32/133
18/22/12/8R	130/31/4R
18/22	
14/12/22	
12/14/16	
8/16/30R	

Model Lucy is a part of **Hair2Be** collection



Maddi colours:

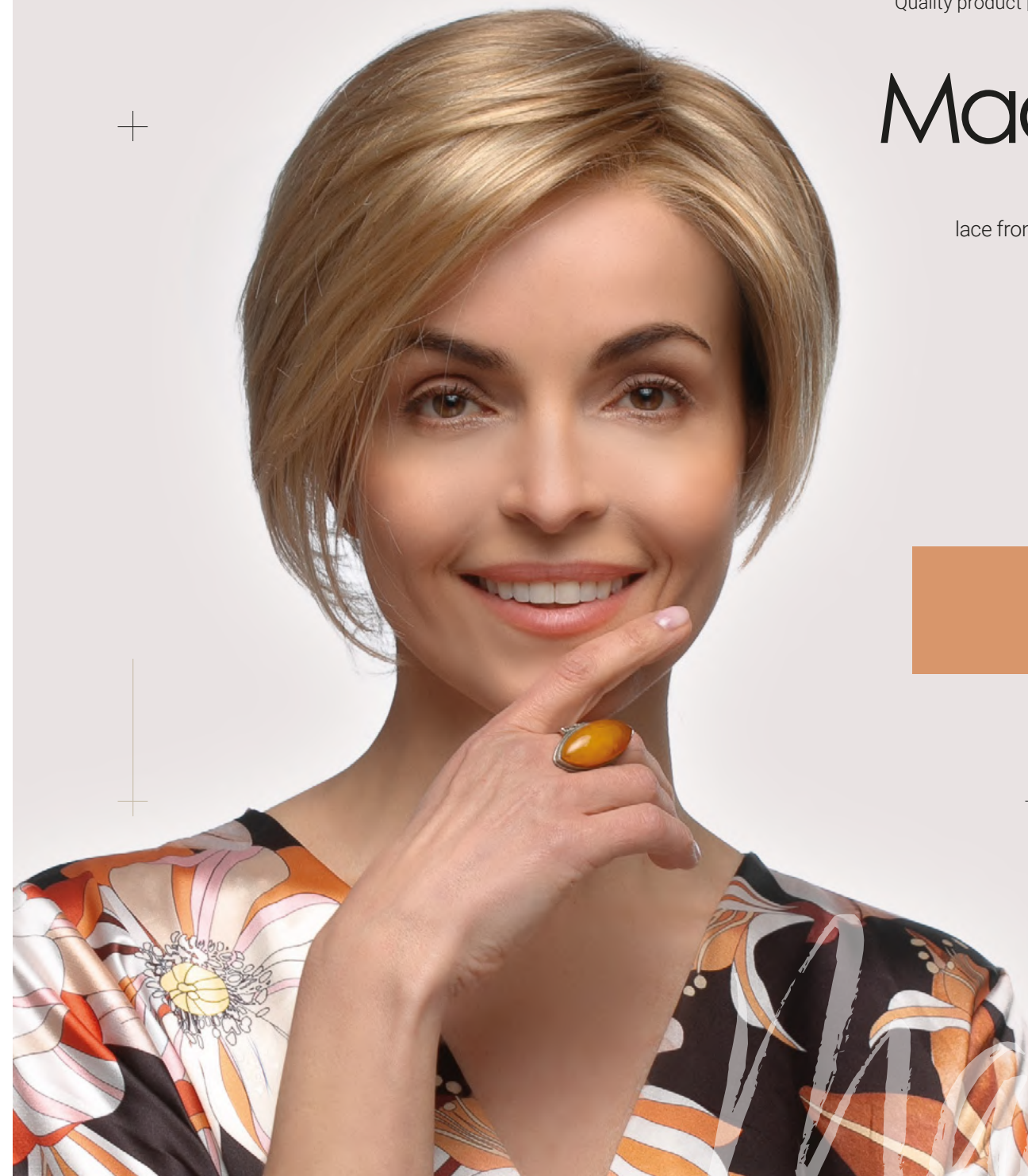
- 16/101/8R
- 14/88/8R
- 10/24/80
- 4/30/27/4R
- 830/28/30/4R
- 2



maddi

Maddi

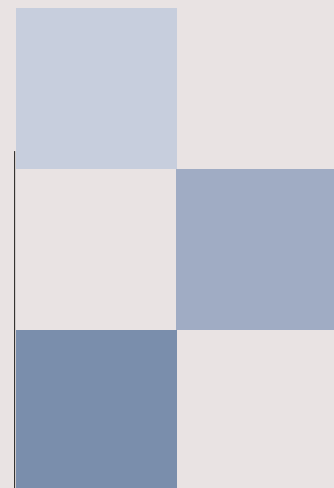
base:  
lace front / mono part





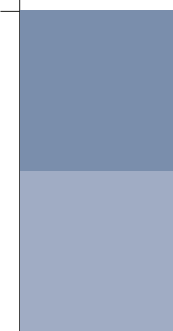
# Michelle

**base:**  
lace front / mono crown

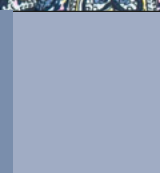


## Michelle colours:

- 10/613/8R
- 26/27/19/8R
- 14/16
- 10/14/80/8R
- 8/14/6R**
- 2
- 30/33



# michelle





Millie colours:

- 56
- 38/48/36
- 101/24/38R
- 22/16
- 26/27/20
- 18/24/22
- 14/12/22
- 8/27
- 8/12/10
- 4/6
- 23N/28/30/30R



millie

Millie

base:  
lace front / mono part





# Montgomery

base:  
mono crown



## Montgomery colours:

- 24/25/23
- 26/25/22
- 22/16
- 18/22
- 14/12/22
- 12/14/16
- 10/18/14
- 8/16/30R
- 4/6
- 33/830
- 23N/28/30/30R
- 130/31/4R



# montgomery



Olivia colours:

- 26/27/19/8R
- 14/88
- 10/24/80/8R
- 8/14
- 4/30/27/4R
- 4/33



olivia

Olivia

base:  
lace front / mono part





# Patty

base:  
wefted



## Patty colours:

- 48/56/101
- 14/88/8R
- 14/16/8R
- 10/24/80
- 12/26/19/6R
- 830/6/4
- 33/30



patty



Philippa colours:

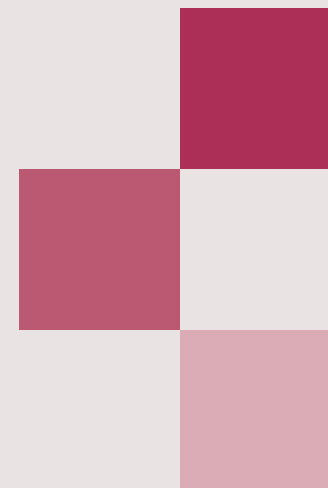
- 24/25/23/12R
- 26/27/20
- 18/22/12/8R
- 5/14/4R
- 4/30/6R**
- 830/131/14
- 1



philippa

# Philippa

base:  
mono crown

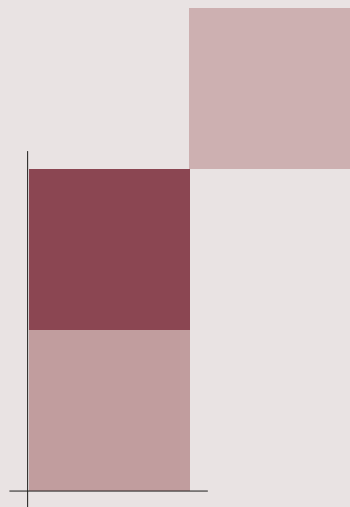


Philippa



# Polly

base:  
mono crown



Polly colours:

- 101/60/14/8R
- 10/14/80
- 10/24/80/8R
- 8/14/6R
- 830/6/4
- 2





**Silvia** colours:

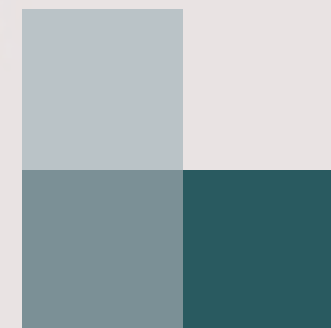
- 48/56/101
- 14/88/8R
- 14/16/8R
- 10/14/80/8R
- 8/14/6R
- 2



**silvia**

**Silvia**

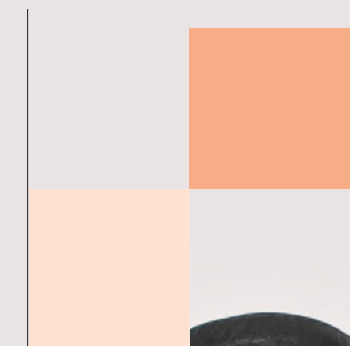
**base:**  
lace front / mono part





# Tina

**base:**  
lace front / mono part



**Tina** colours:

- 16/101/8R
- 26/27/19/8R
- 14/88/8R
- 10/14/80R
- 8/14/6R
- 830/6/4**
- 2



Model Tina is a part of **Hair2Be** collection



Valerie colours:

- 24/25/23/12R
- 26/27/20
- 18/22/12/8R
- 33/830
- 4/30/6R
- 130/31/4R



valerie

# Valerie

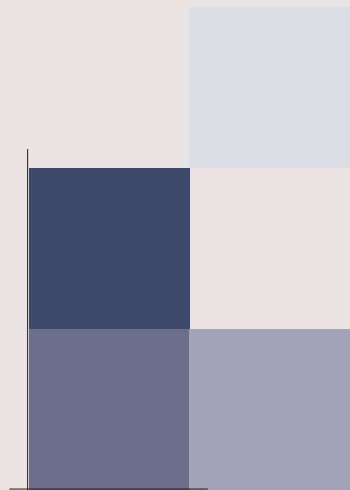
base:  
lace front / mono part





# Wendy

**base:**  
lace front / mono top



## Wendy colours:

- 48/56/101
- 14/88/8R
- 10/24/80
- 8/14/6R
- 4/33**
- 33/30





Yvette colours:

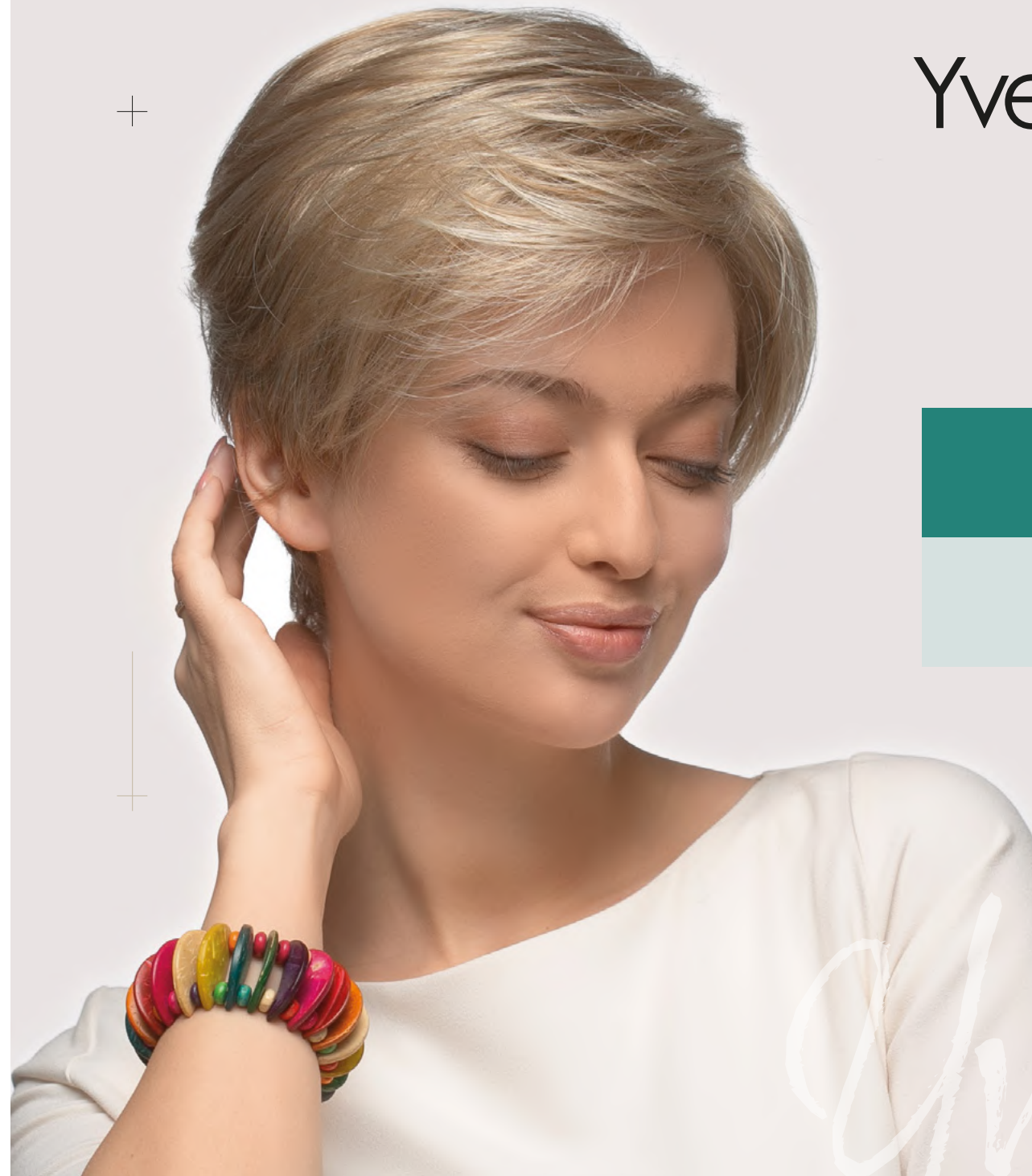
- 48/56/101
- 26/27/19/8R
- 14/88/8R
- 10/14/80
- 4/30/27/4R
- 4/33



yvette

Yvette

base:  
lace front





# Yvonne

base:  
mono crown



## Yvonne colours:

- 101/60/14
- 10/14/80
- 10/24/80/8R
- 4/30/27/4R
- 4/33
- 830/28/30/4R



yvonne



# Contents

Alexandra .....	6	Gianna .....	46
Amanda .....	8	Gloria .....	48
Ann .....	10	Gracie .....	50
Annabel.....	12	Jessamy.....	52
Anwan.....	14	Kira .....	54
Aramita.....	16	Lucy .....	56
Aurora .....	18	Maddi.....	58
Brooke .....	20	Michelle.....	60
Camilla .....	22	Millie .....	62
Carla .....	24	Montgomery.....	64
Catherina.....	26	Olivia .....	66
Catriona .....	28	Patty .....	68
Chrisitna.....	30	Philippa .....	70
Cloe .....	32	Polly .....	72
Cora.....	34	Silvia.....	74
Cornelia.....	36	Tina.....	76
Danielle .....	38	Valerie .....	78
Emily .....	40	Wendy.....	80
Evie .....	42	Yvette.....	82
Frederica .....	44	Yvonne.....	84







[www.rokoko.com.pl](http://www.rokoko.com.pl)