



HAIR  
UP!

SYNTHETIC WIGS COLLECTION



Choosing the right hairstyle can make a big difference in how you feel about yourself. It's important to choose a style that flatters your face shape, complements your features, and fits your lifestyle.

Yes, the Hair Up! collection offers a wide variety of hairstyles to choose from, including different lengths, colours, and textures, so you can find the perfect style to suit your individual needs and preferences.

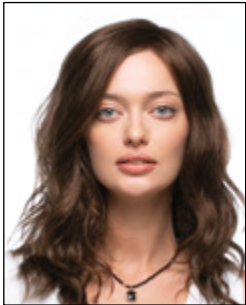
**TRY IT AND  
LOVE IT!**



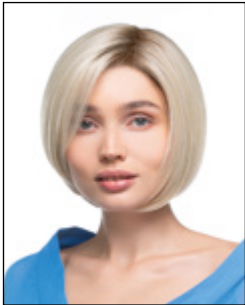
OUR  
MODELS

Heat resistant fiber

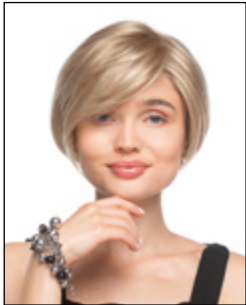
Some of the models are Heat Resistant. The fibre of this synthetic hair is made to withstand heat. You can curl or wave this hair using heat up to 130 degrees Celsius.



Bachata ..... 10



Ballet ..... 12



Bergamaska ..... 14



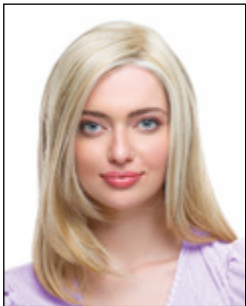
Bolero ..... 16



Calata ..... 18



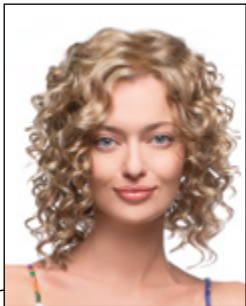
Chacha ..... 20



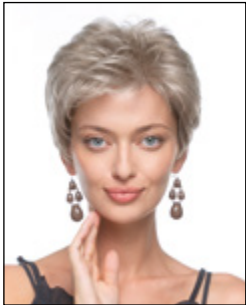
Fast ..... 22



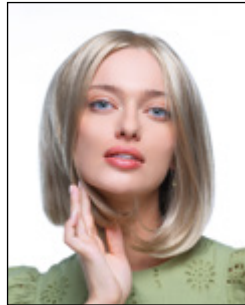
Foxtrot ..... 24



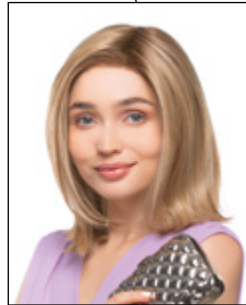
Funky ..... 26



Jive ..... 28



Jump ..... 30



Modern ..... 32



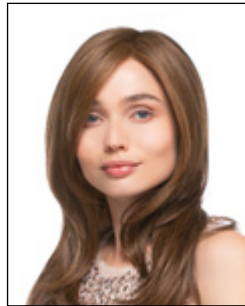
Morna ..... 34



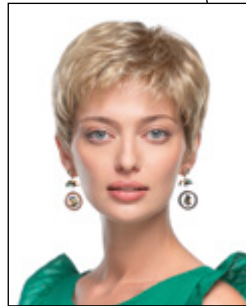
Samba ..... 36



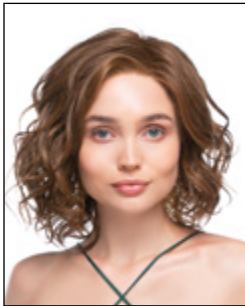
Sega ..... 38



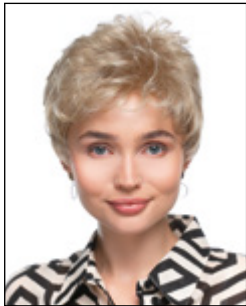
Sound ..... 40



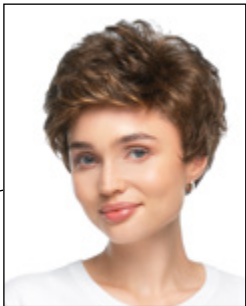
Swing ..... 42



Tango ..... 44



Twist ..... 46



Walk ..... 48



OUR

COLOURS

Please note

We make every effort to ensure that the samples and hair colours presented in this catalogue look like they really are. However due to printing techniques, colours may vary from real ones.



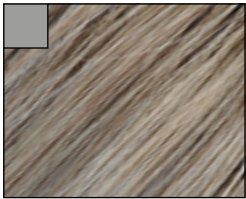
61



305K



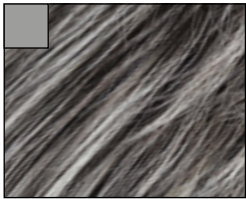
66/101/8R



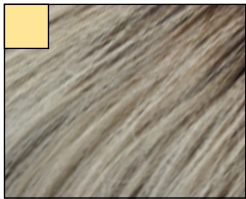
101/60/14



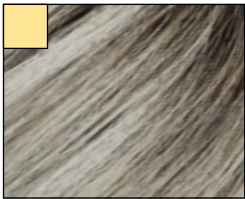
51/56/60/1BR



44/56/60



16/101/8R



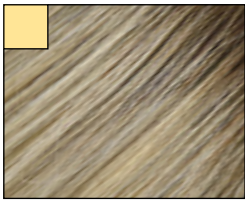
17/101/8R



14/23/6R



15/23/6R



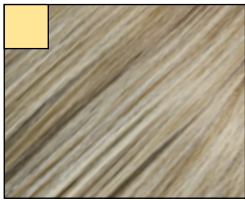
24/60/8R



26/27/20



101/24/38R



22/16



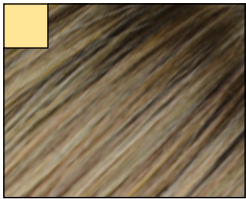
16/22/23/8R



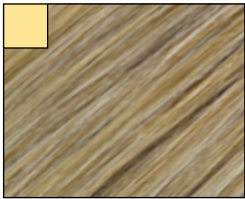
23/66/8R



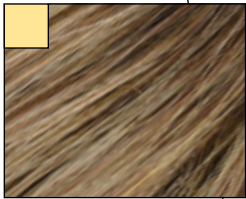
18/24/22



18/24/22/8R



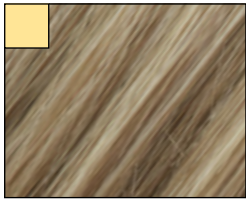
26/25/22



26/25/22/10R



R14/88/8R



14/88



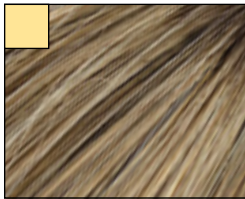
14/88/8R



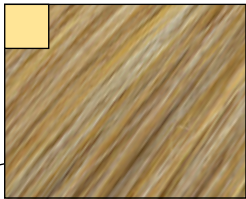
14/16



14/16/6R



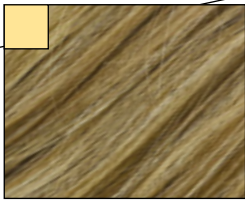
14/16/8R



12/22/26



11/24/80/8R



16/21



18/22/12



18/22/12/8R



10/14/80



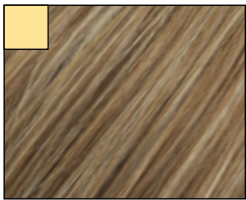


MORE OF OUR

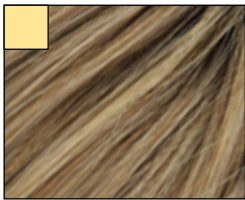
COLOURS

Please note

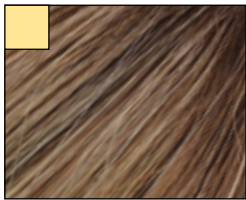
We make every effort to ensure that the samples and hair colours presented in this catalogue look like they really are. However due to pronting techniques, color may vary from real ones.



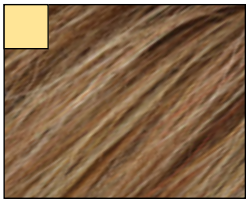
10/24/80



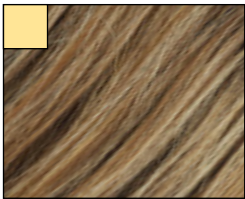
10/24/80/8R



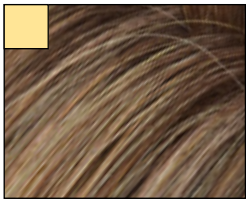
15/88/8R



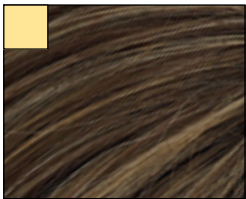
12/26/19



26/27/19



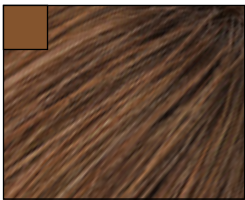
26/27/19/8R



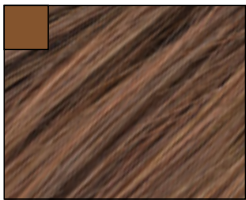
12/26/19/6R



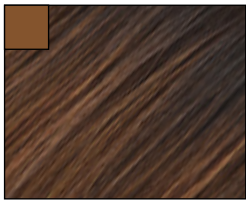
6/12/19/6R



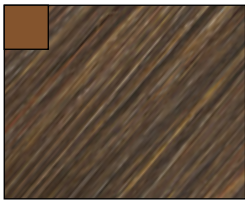
8/14/6R



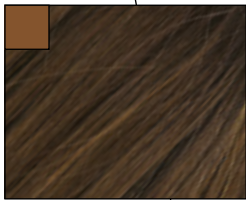
830/6/4



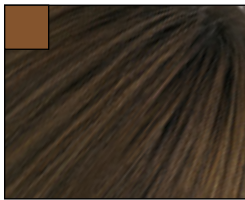
6/30/8/6R



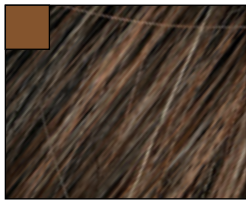
33/830



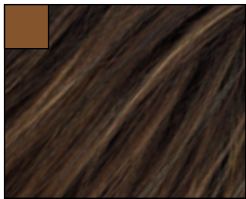
5/14/4R



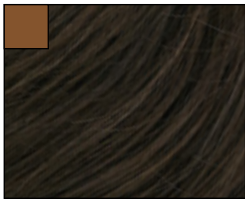
6/8/4R



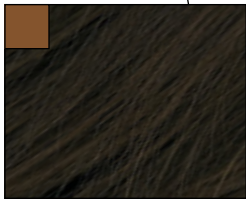
4/33



4/30/27/4R



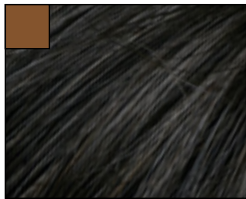
4/8



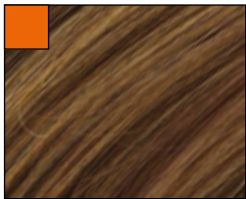
4/6



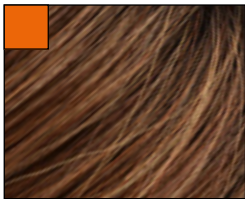
R2



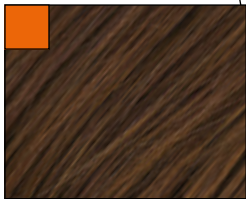
2



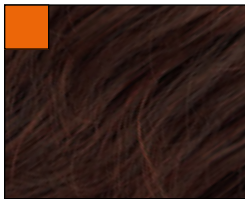
830/131/14



830/28/30/4R



30/33



33/130



BASE TYPE:  
LACE FRONT / MONO PART

**BACHATA**

Colours:

- 23/66/8R
- R14/88/8R
- 26/25/22/10R
- 6/12/19/6R
- 6/8/4R
- R2

10 HAIR UP!

BACHATA IS A PART OF HairUP! / SYNTHETIC WIGS COLLECTION

HAIR UP! 11



BASE TYPE:  
LACE FRONT / MONO PART

**BALLET**

Colours:

- 51/56/60/1BR
- 24/60/8R
- 22/16
- 14/16/6R
- 6/8/4R
- 830/131/14



12 **HAIR UP!**

BALLET IS A PART OF HairUP! / SYNTHETIC WIGS COLLECTION

**HAIR UP!** 13



BASE TYPE:  
LACE FRONT / MONO PART

# BERGAMASKA

Colours:

- 16/101/8R
- 26/27/19
- 14/88
- 10/24/80/8R
- 8/14/6R
- 4/30/27/4R

14 HAIR UP!

BERGAMASKA IS A PART OF HairUP! / SYNTHETIC WIGS COLLECTION

HAIR UP! 15



BASE TYPE:  
LACE FRONT / MONO PART

**BOLERO**

Colours:

- 16/101/8R
- 14/88/8R
- 10/14/80
- 14/16/8R
- 12/26/19/6R
- 4/30/27/4R





BASE TYPE:  
MONO CROWN

**CALATA**

Colours:

- 26/27/19/8R
- 15/88/8R
- 14/16/8R
- 15/23/6R
- 11/24/80/8R
- 4/30/27/4R



18 HAIR UP!

CALATA IS A PART OF HairUP! / SYNTHETIC WIGS COLLECTION

HAIR UP! 19



BASE TYPE:  
LACE FRONT / MONO TOP

**CHACHA**

Colours:

- 16/101/8R
- 26/27/19/8R
- 14/88/8R
- 10/24/80**
- 830/6/4
- 4/33



CHACHA IS A PART OF HairUP! / SYNTHETIC WIGS COLLECTION





BASE TYPE:  
TOUPÉE / LACE FRONT / MONO TOP

**FAST**

Colours:

- 17/101/8R
- 15/88/8R
- 10/14/80
- 12/22/26
- 8/14/6R
- 2

base size 16x15cm



22 HAIR UP!

FAST IS A PART OF HairUP! / SYNTHETIC WIGS COLLECTION

HAIR UP! 23



BASE TYPE:  
LACE FRONT / MONO PART

FOXTROT

Colours:

- 66/101/8R
- 305K
- 16/21
- 26/27/20
- 14/16/6R
- 5/14/4R
- 6/30/8/6R
- 4/6



24 HAIR UP!

FOXTROT IS A PART OF HairUP! / SYNTHETIC WIGS COLLECTION

HAIR UP! 25



BASE TYPE:  
MONO CROWN

**FUNKY**

Colours:

- 26/27/19/8R
- 14/88/8R
- 14/23/6R
- 10/24/80**
- 12/26/19/6R
- 8/14/6R
- 4/33



FUNKY IS A PART OF HairUP! / SYNTHETIC WIGS COLLECTION

26 HAIR  
UP!



HAIR  
UP! 27



BASE TYPE:  
WEFTED

**JIVE**

Colours:

- 44/56/60
- 101/60/14
- 14/88/8R
- 14/16/8R
- 12/26/19
- 8/14/6R
- 33/30



28 **HAIR UP!**

JIVE IS A PART OF HairUP! / SYNTHETIC WIGS COLLECTION

**HAIR UP!** 29



BASE TYPE:  
LACE FRONT / MONO PART

**JUMP**

Colours:

- 101/24/38R
- 26/25/22
- 18/22/12/8R
- 16/22/23/8R
- 5/14/4R
- 6/8/4R
- R2





BASE TYPE:  
LACE FRONT / MONO TOP

**MODERN**

Colours:

- 101/24/38R
- 22/16
- 18/24/22/8R
- 14/16/6R
- 6/12/19/6R
- R2



32 **HAIR UP!**

MODERN IS A PART OF HairUP! / SYNTHETIC WIGS COLLECTION

**HAIR UP!** 33



BASE TYPE:  
WEFTED / LACE FRONT

**MORNA**

Colours:

- 66/101/8R
- 305K
- 16/22/23/8R
- 26/25/22
- 18/22/12
- 5/14/4R
- 4/6
- 30/33



MORNA IS A PART OF HairUP! / SYNTHETIC WIGS COLLECTION





BASE TYPE:  
LACE FRONT / MONO TOP

**SAMBA**

Colours:

- 101/24/38R
- R14/88/8R
- 14/16/6R
- 6/8/4R
- 830/131/14



36 HAIR UP!

SAMBA IS A PART OF HairUP! / SYNTHETIC WIGS COLLECTION

HAIR UP! 37



BASE TYPE:  
MONO CROWN

**SEGA**

Colours:

- 61
- 14/88/8R
- 14/16/8R
- 10/24/80**
- 12/26/19
- 8/14/6R
- 4/30/27/4R
- 2

38

HAIR  
UP!

SEGA IS A PART OF HairUP! / SYNTHETIC WIGS COLLECTION

HAIR  
UP!

39



BASE TYPE:  
LACE FRONT / MONO TOP

**SOUND**

Colours:

- 101/24/38R
- R14/88/8R
- 14/16/6R
- 6/8/4R
- R2
- 830/131/14



40 HAIR UP!

SOUND IS A PART OF HairUP! / SYNTHETIC WIGS COLLECTION



HAIR UP! 41



BASE TYPE:  
WEFTED

**SWING**

Colours:

- 101/60/14
- 16/101/8R
- 26/27/19/8R
- 14/88/8R
- 10/24/80**
- 4/30/27/4R
- 830/28/30/4R



SWING IS A PART OF HairUP! / SYNTHETIC WIGS COLLECTION





BASE TYPE:  
LACE FRONT / MONO PART

**TANGO**

Colours:

- 101/24/38R
- R14/88/8R
- 18/24/22
- 6/8/4R
- 830/131/14



44 HAIR UP!

TANGO IS A PART OF HairUP! / SYNTHETIC WIGS COLLECTION

HAIR UP! 45



BASE TYPE:  
WEFTED

**TWIST**

Colours:

- 61
- 44/56/60
- 26/27/19
- 14/88**
- 14/16
- 10/24/80/8R
- 8/14/6R
- 33/130



46 HAIR UP!

TWIST IS A PART OF HairUP! / SYNTHETIC WIGS COLLECTION

HAIR UP! 47



BASE TYPE:  
WEFTED

**WALK**

Colours:

- 51/56/60/1BR
- 23/66/8R
- 26/25/22
- 18/22/12/8R
- 33/830
- 5/14/4R
- 4/8





# CONTENT

MODELS .....	4
COLOURS.....	6
BACHATA.....	10
BALLET.....	12
BERGAMASKA .....	14
BOLERO.....	16
CALATA.....	18
CHACHA .....	20
FAST.....	22
FOXTROT.....	24
FUNKY.....	26
JIVE .....	28
JUMP.....	30
MODERN.....	32
MORNA .....	34
SAMBA.....	36
SEGA.....	38
SOUND .....	40
SWING.....	42
TANGO.....	44
TWIST .....	46
WALK.....	48







SYNTHETIC WIGS COLLECTION



[WWW.HAIRPARTNERS.EU](http://WWW.HAIRPARTNERS.EU)