



FOLLEA®

CATALOG 2014 / 2015

# Contents

HOW TO ORDER .....	PAGE 03
TRULIFE™ COLOR CHART .....	PAGE 04
2013 NEXT GENERATION WIGS .....	PAGE 05
LIFESTYLE-2 COLLECTION .....	PAGE 06
AERO-2 COLLECTION .....	PAGE 10
GRIPPER-2 COLLECTION .....	PAGE 15
GRIPPER KIDS .....	PAGE 20
STANDARD CAP SIZE CHART .....	PAGE 21
GRIPPER CAP SIZE CHART .....	PAGE 22
WIG OPTIONS TABLE .....	PAGE 23
ADDITIONAL TEXTURES .....	PAGE 24
2013 TOPETTE® CROWN EXTENSIONS .....	PAGE 25
LIFESTYLE-2 COLLECTION .....	PAGE 26
AERO-2 COLLECTION .....	PAGE 27
TOPETTE® OPTIONS TABLE .....	PAGE 29
ACCESSORIES .....	PAGE 30

# How to Order

1

**CHOOSE YOUR COLLECTION & STYLE:**



EACH FOLLEA COLLECTION OFFERS A  
CHOICE OF COLOR AND STYLE

2

**CHOOSE YOUR COLOR:**



FROM FOLLEA'S TruLife2™ COLORS FOR  
YOUR SELECTED COLLECTION.  
SEE PAGE 4 FOR OUR COLOR CHART.

3

**CHOOSE YOUR SIZE:**



CONSULT THE FITTING CHART FOR  
YOUR CHOSEN COLLECTION, CAREFULLY  
READING THE SIZING INSTRUCTIONS.  
SEE PAGES 21 & 22 FOR OUR WIG SIZING  
CHARTS. TOPETTE® SIZES ARE GIVEN IN  
THE TOPETTE® SECTION.

4

**FIND YOUR NEAREST FOLLEA  
REPRESENTATIVE:**



PHONE: +1-310-858-0100  
OR +1-888-436-5532



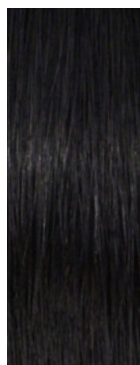
FAX: +1-310-858-9199



EMAIL: [HAIR@FOLLEA.COM](mailto:HAIR@FOLLEA.COM)

# TrueLife™ Colors

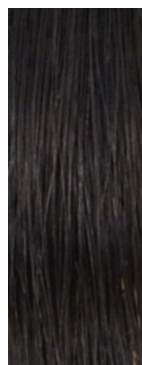
## TRULIFE™ BROWNS:



**1000**

**OBSIDIAN**

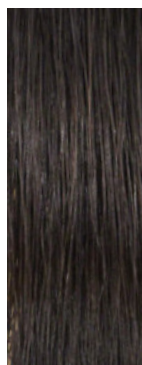
Salon: 1N  
JL: 1B



**1010**

**ESPRESSO**

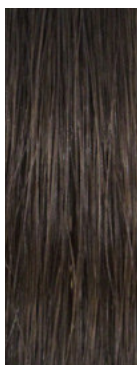
Salon: 3N  
JL: 2



**2060**

**WARM  
CHOCOLATE**

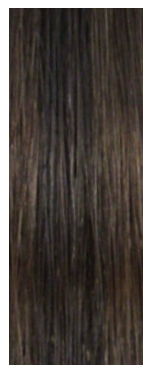
Salon: 4N  
JL: 4R



**3045**

**CHESTNUT  
BROWN**

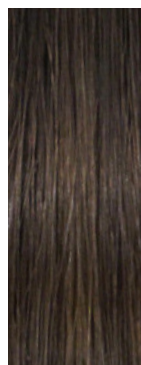
Salon: 4G  
JL: 6R



**3050**

**CHESTNUT  
BROWN w/  
LOW-LIGHT**

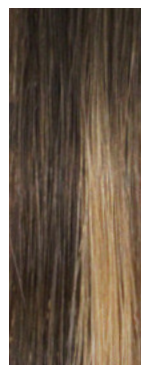
Salon: 4G/5N  
JL: 6/8



**3060**

**LIGHT COFFEE**

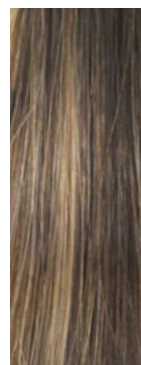
Salon: 5N  
JL: 8



**5010**

**LIGHT  
BROWN w/  
BUTTERSCOTCH  
HI-LIGHTS**

Salon: 6G/7G  
JL: 10-14/24



**5030**

**DARK  
BLONDE w/  
BUTTERSCOTCH  
HI-LIGHTS**

Salon: 6G/7G  
JL: 10/24-10



**6020**

**RADIANT  
BLONDE w/  
LIGHT ASH  
LOW-LIGHTS**

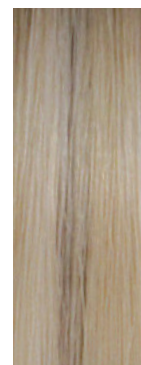
Salon: 10G/6N  
JL: 24-10



**7020**

**LIGHT BLONDE  
w/ HONEY  
LOW-LIGHTS**

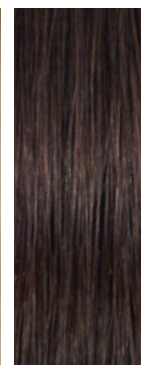
Salon: 10G/7G  
JL: 20/27B



**10030**

**RADIANT  
BLONDE w/  
BUTTERSCOTCH  
LOW-LIGHTS**

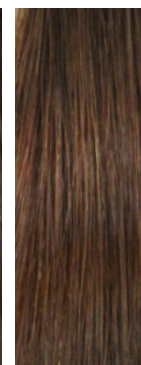
Salon: 12G/8G  
JL: 24



**15010**

**PLUM**

Salon: 4RN  
JL: 33



**15040**

**TOASTED  
CINNAMON**

Salon: 7RN  
JL: 32

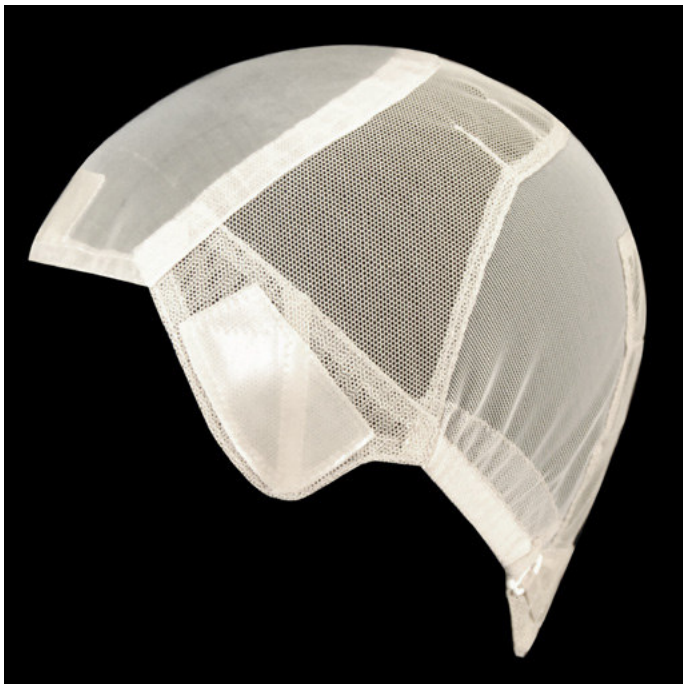




FOLLEA®  
W I G S 2 0 1 3

*Next Generation  
Supremely Natural European Hair Wigs for Women*

# Lifestyle-2



FOLLEA'S LIFESTYLE-2 FEATURES OUR TRULY AMAZING PREMIUM EUROPEAN HAIR.

- USING THE BEST OF OUR EUROPEAN PONYTAIL HAIR WITH CUTICLE INTACT.
- STRAIGHT WITH BODY.
- DOUBLE DRAWN TO REMOVE SHORT HAIRS AND CREATE MORE VOLUME.
- 100% CUTICLE CORRECT TO AVOID TANGLING AND MATTING.
- GENTLE COLORING IN SMALL BATCHES TO PROTECT THE NATURAL CHARACTER AND BEAUTY OF THE HAIR, WHILE ENSURING AN ACCURATE MATCH TO FOLLEA'S COLOR CHART.

100% HAND TIED. EACH INDIVIDUAL HAIR SEWN BY HAND.

FEATURING "FRENCH TOP" HIDDEN KNOT-WORK. INDISTINGUISHABLE FROM NATURAL SKIN.

SUITED TO SLEEK, FLATTER STYLES. BEST WORN WITH BANGS OR INTEGRATED INTO HAIRLINE.

ATTACHMENT BY TAPE, CLIP OR COMBS. UNSUITABLE FOR BONDING.

AVAILABLE NOW FROM BEVERLY HILLS STOCK:

- AVAILABLE IN 3 LAYERED LENGTHS.
- STRAIGHT WITH NATURAL BODY TEXTURE.
- CHOOSE ANY OF OUR 13 TruLife™ COLORS.



# Lifestyle 6/11

## Short

### SPECIFICATIONS

6" LAYERED (15 cm)  
11" OVERALL (28 cm)

FRINGE: 6" (15 cm)  
TOP: 6" (15 cm)  
CROWN: 6" (15 cm)  
SIDE: 6" (15 cm)  
NAPE: 4" (10 cm)

CAP TYPE: 03B  
ITEM CODE: L06LY PE



(INSET SHOWS FACTORY LENGTH)





# Lifestyle 10/15

## Medium Long



(INSET SHOWS FACTORY LENGTH)

### SPECIFICATIONS

10" LAYERED (25 cm)

15" OVERALL (38 cm)

FRINGE: 10" (25 cm)

TOP: 10" (25 cm)

CROWN: 10" (25 cm)

SIDE: 10" (25 cm)

NAPE: 8" (20 cm)

CAP TYPE: 03B

ITEM CODE: LIOLY PE



# Lifestyle 14/19

## Very Long

### SPECIFICATIONS

14" LAYERED (35 cm)  
19" OVERALL (48 cm)

FRINGE: 14" (35 cm)  
TOP: 14" (35 cm)  
CROWN: 14" (35 cm)  
SIDE: 14" (35 cm)  
NAPE: 12" (30 cm)

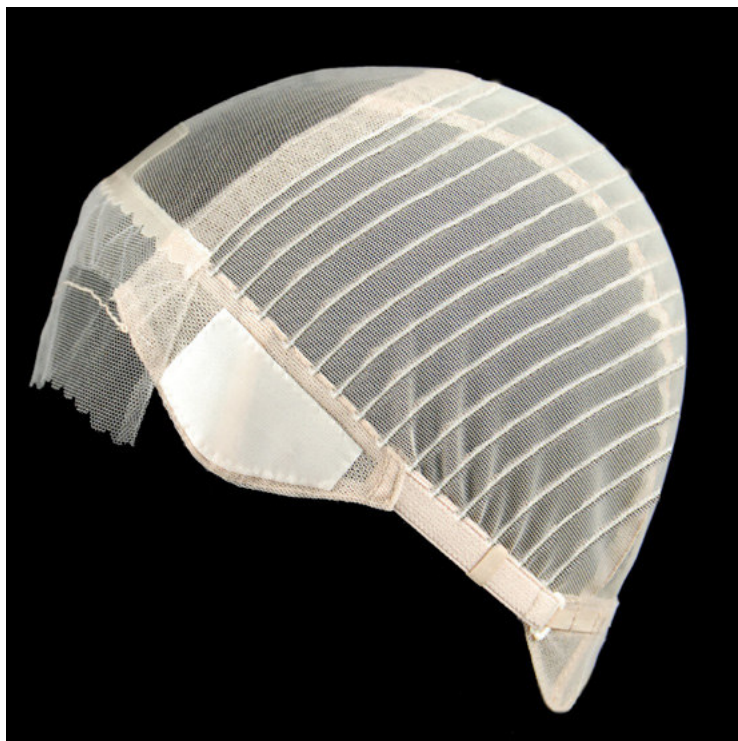
CAP TYPE: 03B  
ITEM CODE: L14LY PE



(INSET SHOWS FACTORY LENGTH)



# Aéro 2



FOLLEA'S AÉRO-2 BRINGS FOLLEA'S CHARACTERISTIC REALISM, FULLNESS AND DENSITY—WITHOUT BREAKING YOUR BUDGET.

WITH THIS SPECIAL FOLLEA OPEN LACE FRONT YOU GET AN INCREDIBLY NATURAL HAIRLINE WITHOUT USING TAPE OR GLUE.

FOLLEA'S BEST IN CLASS "EP" EUROPEAN HAIR.

- GENTLY PROCESSED IN HOUSE IN SMALL BATCHES TO PROTECT THE NATURAL CHARACTER AND BEAUTY OF OUR HAIR.
- FOLLEA'S EUROPEAN PONYTAIL CUTICLE HAIR.
- DOUBLE DRAWN FOR CONSISTENT HAIR LENGTH.

OUR UNIQUE SOFT-FIT™ HEAD-HUGGING CAP .

- HAND TIED TOP AND FRONT BY FOLLEA'S BEST ARTISANS.
- FULLY LINED, CLOSE-WEFTED BACK TO PRECISE SPECIFICATIONS.
- ATTACHMENT BY TAPE OR CLIPS.

SUITABLE FOR ALL HAIR WEARERS. IDEAL FOR STYLES NEEDING VOLUME.

AVAILABLE NOW FROM BEVERLY HILLS STOCK:

- AVAILABLE IN STRAIGHT WITH BODY HAIR TEXTURE IN 4 LAYERED LENGTHS.
- CHOOSE ANY OF OUR 13 TruLife™ COLORS.



# Aéro 6/11

## Short

### SPECIFICATIONS

6" LAYERED (15 cm)  
11" OVERALL (28 cm)

FRINGE: 6" (15 cm)  
TOP: 6" (15 cm)  
CROWN: 6" (15 cm)  
SIDE: 6" (15 cm)  
NAPE: 4" (10 cm)

CAP TYPE: 12B  
ITEM CODE: A6LY EP



(INSET SHOWS FACTORY LENGTH)





# Aéro 8/13

## Medium



(INSET SHOWS FACTORY LENGTH)

### SPECIFICATIONS

8" LAYERED (20 CM)  
13" OVERALL (33 CM)

FRINGE: 8" (20 CM)  
TOP: 8" (20 CM)  
CROWN: 8" (20 CM)  
SIDE: 8" (20 CM)  
NAPE: 6" (15 CM)

CAP TYPE: I2B  
ITEM CODE: A8LY EP

# Aéro 12/17

## Long

### SPECIFICATIONS

12" LAYERED (30 CM)  
17" OVERALL (43 CM)

FRINGE: 12" (30 CM)  
TOP: 12" (30 CM)  
CROWN: 12" (30 CM)  
SIDE: 12" (30 CM)  
NAPE: 10" (25 CM)

CAP TYPE: 12B  
ITEM CODE: AI2LY EP



(INSET SHOWS FACTORY LENGTH)





# Aéro 14/19

## Very Long



### SPECIFICATIONS

14" LAYERED (35 CM)  
19" OVERALL (48 CM)

FRINGE: 14" (35 CM)  
TOP: 14" (35 CM)  
CROWN: 14" (35 CM)  
SIDE: 14" (35 CM)  
NAPE: 12" (30 CM)

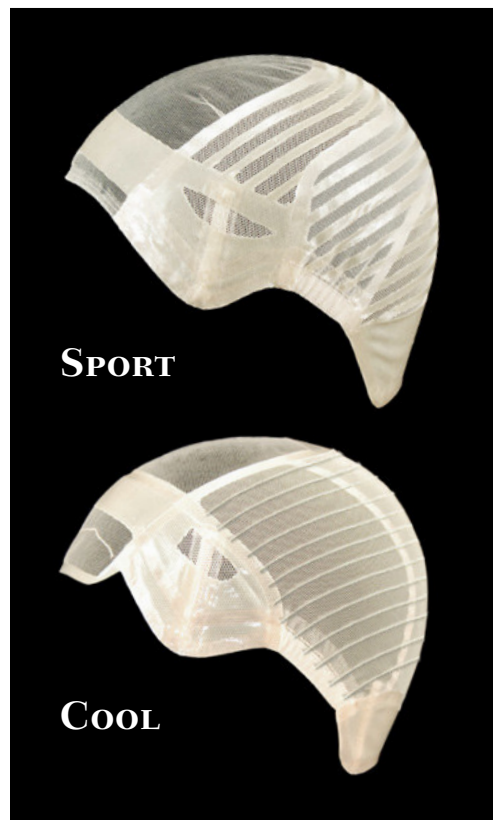
CAP TYPE: 12B

ITEM CODE: A14LY EP

(INSET SHOWS FACTORY LENGTH)



# Gripper-2



FOLLEA'S REVOLUTIONARY PRODUCT LINE FOR WOMEN WITH LITTLE OR NO HAIR.

- AVAILABLE IN TWO CAP DESIGNS. COOL FOR CASUAL WEAR AND SPORT FOR ACTIVE HAIR WEARERS AND CHILDREN.
- OPEN LACE FRONT FOR A NATURAL HAIRLINE.
- HAND TIED FRONT AND TOP, FULLY LINED CLOSE-WEFTED BACK.
- FULL HAIR DENSITY ON A FOLLEA SOFT-FIT™ GRIPPER CAP.
- SECURE, CONFIDENT, AND COMFORTABLE FIT, WITHOUT TAPE. THE GRIPPER IS HELD IN PLACE WITH MEDICAL GRADE SILICONE GRIPPER PANELS. (PLEASE NOTE THAT ADHESIVES WILL NOT STICK TO THE GRIPPER.)

FEATURING FOLLEA'S FABULOUS EUROPEAN PONYTAIL HAIR.

- GENTLY PROCESSED IN HOUSE IN SMALL BATCHES TO PROTECT THE NATURAL CHARACTER AND BEAUTY OF OUR HAIR.
- DOUBLE DRAWN FOR CONSISTENT HAIR LENGTH AND ADDED VOLUME.

FOLLEA'S GRIPPER-2 AVAILABLE NOW FROM BEVERLY HILLS STOCK:

- GRIPPER COOL OR GRIPPER SPORT.
- 4 LAYERED LENGTHS.
- GRIPPER IS AVAILABLE IN 4 SIZES (XXS, XS, S, M)
- AVAILABLE IN STRAIGHT WITH BODY TEXTURE.
- CHOOSE ANY OF 3 TruLife™ COLORS.

# Gripper 6/11

## Short



(INSET SHOWS FACTORY LENGTH)

### SPECIFICATIONS

6" LAYERED (15 cm)  
11" OVERALL (28 cm)

FRINGE: 6" (15 cm)  
TOP: 6" (15 cm)  
CROWN: 6" (15 cm)  
SIDE: 6" (15 cm)  
NAPE: 4" (10 cm)

CAP TYPE: 04  
ITEM CODE: G6L EP



# Gripper 8/13

## Medium

### SPECIFICATIONS

8" LAYERED (20 CM)

13" OVERALL (33 CM)

FRINGE: 8" (20 CM)

TOP: 8" (20 CM)

CROWN: 8" (20 CM)

SIDE: 8" (20 CM)

NAPE: 6" (15 CM)

CAP TYPE: 04

ITEM CODE: G8L EP



(INSET SHOWS FACTORY LENGTH)





# Gripper 12/17

## Long



(INSET SHOWS FACTORY LENGTH)

### SPECIFICATIONS

12" LAYERED (30 CM)

17" OVERALL (43 CM)

FRINGE: 12" (30 CM)

TOP: 12" (30 CM)

CROWN: 12" (30 CM)

SIDE: 12" (30 CM)

NAPE: 10" (25 CM)

CAP TYPE: 04

ITEM CODE: G12L EP



# Gripper 14/19

## Very Long

### SPECIFICATIONS

14" LAYERED (35 cm)  
19" OVERALL (48 cm)

FRINGE: 14" (35 cm)  
TOP: 14" (35 cm)  
CROWN: 14" (35 cm)  
SIDE: 14" (35 cm)  
NAPE: 12" (30 cm)

CAP TYPE: 04  
ITEM CODE: G14L EP



(INSET SHOWS FACTORY LENGTH)



# Gripper Kids



**OUR YOUNGEST HAIR WEARERS ARE ALSO OUR MOST ACTIVE...**

**AND ACTIVE IS WHAT GRIPPER WAS MADE FOR.**

BETTER YET, WITH NONE OF THE TROUBLES OF TAPING OR GLUEING, HAVING ADDED OR REPLACEMENT HAIR WHILE BEING A REGULAR KID IS EASIER THAN EVER.

PICTURED HERE IS THE XXS GRIPPER SPORT\* IN COLOR C10030.

KID'S GRIPPERS CAN BE MADE IN ANY OF:


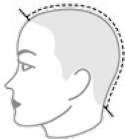


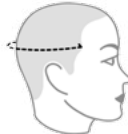
- 4 LAYERED LENGTHS.
- STRAIGHT WITH BODY TEXTURE.
- 13 TruLife™ COLORS.
- OTHER TEXTURES AVAILABLE BY CUSTOM ORDER.

*\*Gripper XXS is a limited stock item and may need special order.*





# Cap Sizes: Lifestyle, Aéro

CAP SIZE**	CIRCUMFERENCE	FRONT TO NAPE	EAR-CROWN-EAR	EAR-FRONT-EAR	TEMPLE-BACK-TEMPLE	
						
<b>XS</b>	19 3/4" 50.2 cm	13" 33 cm	12" 30.5 cm	10 3/4" 27.3 cm	15" 38.1 cm	LIMITED STOCK: FACTORY ORDER AVAILABLE.
<b>S</b>	20 1/4" 51.4 cm	13 1/4" 33.7 cm	12 1/4" 31.1 cm	11" 27.9 cm	15 1/4" 38.7 cm	
<b>M</b>	20 3/4" 52.7 cm	13 1/2" 34.3 cm	12 1/2" 31.8 cm	11 1/4" 28.6 cm	15 1/2" 39.4 cm	SIZE MEDIUM IS CARRIED IN STOCK.
<b>L</b>	21 1/4" 54 cm	13 7/8" 35.2 cm	12 3/4" 32.4 cm	11 1/2" 29.2 cm	15 3/4" 40 cm	NOT IN STOCK; FACTORY ORDER AVAILABLE. SURCHARGES APPLY.
<b>XL</b>	21 3/4" 55.2 cm	14 1/4" 36.2cm	13" 33 cm	11 3/4" 29.8 cm	16" 40.6 cm	

## MEASURING INSTRUCTIONS

**CIRCUMFERENCE:** MEASURE ALL AROUND THE HEAD STARTING FROM THE FRONT HAIRLINE, FOLLOWING OVER THE TOPS OF THE EARS AND BACK UNDER THE BASE OF THE SKULL (WHICH IS USUALLY 2.5 CM OR 1" ABOVE THE NAPE HAIRLINE).

**FRONT TO NAPE:** MEASURE FROM THE CENTER OF THE HAIRLINE TO THE NAPE OF THE NECK (USUALLY 1 1/2" TO 2" OR 3.8 TO 5.1 CM UNDER THE OCCIPITAL BONE).



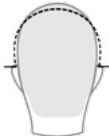

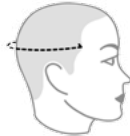
**EAR CROWN EAR:** MEASURE FROM THE HAIRLINE WHERE THE HAIR STARTS ABOVE THE EAR (USUALLY 1 CM OR 2/5" UP FROM THE EAR) ACROSS THE CROWN OF THE HEAD EXTENDING TO THE HAIRLINE ON THE OPPOSITE SIDE.

**EAR FRONT EAR:** MEASURE FROM THE HAIRLINE AT THE TOP FRONT OF THE EARS (BEHIND THE SIDEBURNS WHERE THE HAIR STARTS TO GROW - USUALLY 1 CM OR 2/5" UP AND FORWARD FROM THE EAR), ACROSS THE HAIRLINE ON THE FOREHEAD AND BACK TO THE SAME POSITION ON THE OTHER SIDE.

**TEMPLE BACK TEMPLE:** MEASURE FROM THE HAIRLINE AT THE TEMPLE THEN BACK HORIZONTALLY ACROSS THE PEAK OF THE BACK OF THE HEAD.

\*\* To take these measurements with confidence requires experience with wig fitting. Fitting caps are available—contact Follea to inquire—conditions apply.

# Cap Sizes: Gripper

CAP SIZE**	CIRCUMFERENCE 	FRONT-TO-NAPE 	EAR-CROWN-EAR 	EAR-FRONT-EAR 	TEMPLE-BACK-TEMPLE 	
XXS	19 ¾" 50.2 cm	11 ¾" 29.8 cm	10 ¾" 27.3 cm	11" 27.9 cm	14 ¼" 36.2 cm	LIMITED STOCK: FACTORY ORDER AVAILABLE.
XS	20" 50.8 cm	12" 30.5 cm	11" 27.9 cm	11 ¼" 28.6 cm	14 ½" 36.8 cm	SIZES XS, S, & M ARE CARRIED IN STOCK.
S	20 ½" 52.1 cm	12 ⅝" 31.4 cm	11 ¼" 28.6 cm	11 ½" 29.2 cm	14 ¾" 37.5 cm	
M	21" 53.3 cm	12 ¾" 32.4 cm	11 ½" 29.2 cm	11 ⅝" 29.5 cm	15" 38.1 cm	
L	21 ½" 54.6 cm	13 ¼" 33.7 cm	11 ¾" 29.8 cm	11 ¾" 29.8 cm	15 ¼" 38.7 cm	NOT IN STOCK: FACTORY ORDER AVAILABLE. SURCHARGES APPLY.

## MEASURING INSTRUCTIONS

THE GRIPPER™ WIG IS DESIGNED TO FIT SNUGLY, FOR MAXIMUM PERFORMANCE, CONFIDENCE AND COMFORT. THE CAP FOR THIS PRODUCT LINE WAS DESIGNED SPECIFICALLY FOR WOMEN WITH LITTLE OR NO HAIR TO USE WITHOUT TAPE OR GLUE. THE GRIPPER™ SPORT AND COOL ARE MADE WITH A HAND TIED LACE TOP AND LACE FRONT WHILE THE BACK OF THE WIG IS CREATED WITH MACHINE WEFTING AND THEN LINED.

\*\* This size chart is ONLY for use with Follea Gripper-2 wigs. To take these measurements with confidence requires experience with wig fitting. Fitting caps are available—contact Follea to inquire—conditions apply.

THE GRIPPER FITTING CAP, WITHOUT HAIR, MAY BE USED AS A MEASURING GUIDE. KEEP IN MIND THAT WHILE THE SIZE OF THE CAP DOESN'T CHANGE AFTER ADDING THE HAIR AND SEWING WEFTS, OUR FINISHED COOL AND SPORT MODELS WILL FEEL A LITTLE TIGHTER, ESPECIALLY THE TEMPLE-BACK-TEMPLE SIZE. THIS FEELING IS NORMAL AND HAPPENS BECAUSE THE WEFTS DO NOT STRETCH LIKE A WEFT FREE "STRETCHY" FITTING CAP. TO ORDER YOUR OWN GRIPPER FITTING CAP CALL US AT 1-888-436-5532 OR E-MAIL US AT [HAIR@FOLLEA.COM](mailto:HAIR@FOLLEA.COM).

# Wig Options Table

## Wig Options

## Available in Which Follea Collections\*

STYLE NAME	LAYERED LENGTH	OVERALL LENGTH	LIFESTYLE-2	AÉRO-2	GRIPPER-2 COOL	GRIPPER-2 SPORT
<b>SHORT</b>	6" / 15 CM	11" / 28 CM	YES	YES	YES	YES
<b>MEDIUM</b>	8" / 20 CM	13" / 33 CM	-	YES	YES	YES
<b>MEDIUM-LONG</b>	10" / 25 CM	15" / 38 CM	YES	-	-	-
<b>LONG</b>	12" / 30 CM	17" / 43 CM	-	YES	YES	YES
<b>VERY LONG</b>	14" / 35 CM	19" / 48 CM	YES	YES	YES	YES

\*ALL OF THESE WIGS COME IN FOLLEA NATURAL DENSITY  
STANDARD AND STRAIGHT WITH NATURAL BODY FORMATION.

## Limited Release

NEW HAIR TEXTURES  
IN LIMITED QUANTITIES,  
STYLES, AND DARK COLORS  
ONLY. AVAILABLE IN RELAXED  
AND EXTRA BODY TEXTURES

## ADDITIONAL TEXTURES



RELAXED



EXTRA BODY



# Additional Textures

## Relaxed Texture

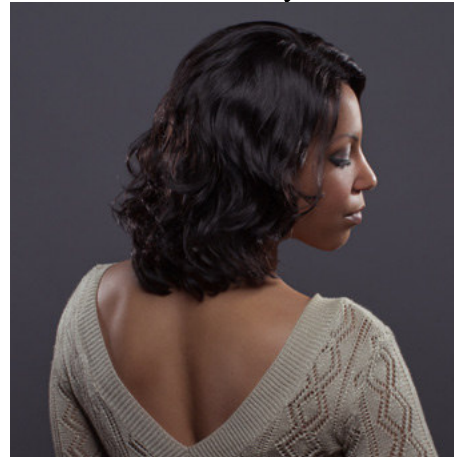


**OUR ALL NEW SMOOTH RELAXED TEXTURE HAS THE MOVEMENT AND MANAGEABILITY OF EUROPEAN HAIR, WITH A “RELAXED” LOOK AND “JUST PRESSED” SHEEN.**

**THIS RARE ETHNIC TEXTURE IS ONLY FOUND IN DARKER COLORS AND IS MADE WITH EUROPEAN PONYTAIL HAIR.**

**AVAILABLE IN THE AÉRO AND GRIPPER COLLECTIONS.**


## Extra Body Texture



**EXTRA BODY TEXTURED HAIR HAS AN UNPERMED, NATURAL AND VERSATILE WAVE THAT CAN BE USED TO CREATE STYLES THAT RANGE FROM SOFT, BEACHY WAVES TO A TIGHT, SCRUNCED CURL.**

**THIS RARE, MULTI-ETHNIC TEXTURE IS ONLY FOUND IN DARKER COLORS AND IS MADE WITH EUROPEAN PONYTAIL HAIR.**

**AVAILABLE IN THE AÉRO AND GRIPPER COLLECTIONS.**



FOLLEA®

TOPETTE® CROWN EXTENSIONS

*Unique, Lightweight  
European Hair Topette® Hair Additions for Women*



# Lifestyle-2

## Lifestyle T100

FOLLEA'S BEAUTIFUL PREMIUM EUROPEAN HAIR TOPETTE® CROWN EXTENSIONS ARE RAISING THE BAR AGAIN.

LIFESTYLE 100 IS A SLEEK CLIP IN, HIDDEN KNOT FRENCH TOP.

- INDISTINGUISHABLE FROM A NATURAL PART.
- DESIGNED FOR COVERAGE OF BOTH EARLY AND LATER STAGE DIFFUSE HAIR LOSS.
- NOT SUITABLE FOR BONDING APPLICATION.

FOLLEA'S BEAUTIFUL PREMIUM EUROPEAN HAIR.

- FOLLEA'S EUROPEAN PONYTAIL CUTICLE HAIR.
- STRAIGHT WITH NATURAL BODY HAIR TEXTURE.
- ALL COLORING DONE IN HOUSE IN SMALL BATCHES TO PROTECT THE NATURAL CHARACTER AND BEAUTY OF THE HAIR.
- DOUBLE DRAWN TO REMOVE SHORT HAIRS AND CREATE MORE VOLUME.
- 100% CUTICLE CORRECT TO AVOID TANGLING AND MATTING.

NOW AVAILABLE FROM BEVERLY HILLS STOCK.

- CHOOSE FROM ANY OF THE 13 TruLife™ PREFERRED COLOR-BLENDS.



10" (25 cm)

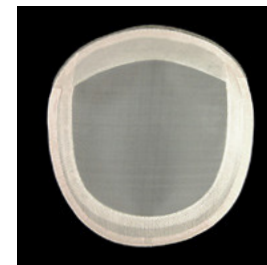
### MEDIUM BASE

- 5" x 6" (12.7 x 15.2 cm)

### LARGE BASE

- 6" x 7½" (15.2 x 19.1 cm)

(TOPETTE ONLY PICTURED)



THE UNIQUE CONSTRUCTION OF THE ACTUAL T100 FRENCH TOP PREVENTS US FROM PHOTOGRAPHING THE BASE WITHOUT HAIR. THE BASE PICTURED HERE HAS BEEN CONSTRUCTED WITH MONO, AND IN SMALL SIZE FOR OPTIMUM RESOLUTION.



14" (35 cm)

### MEDIUM BASE

- 5" x 6" (12.7 x 15.2 cm)

### LARGE BASE

- 6" x 7½" (15.2 x 19.1 cm)

(TOPETTE ONLY PICTURED)

# Aéro-2

FOLLEA'S AÉRO-2 TOPETTES BRING FOLLEA'S CHARACTERISTIC REALISM, FULLNESS AND DENSITY—WITHOUT BREAKING YOUR BUDGET.

MADE BY THE SAME CRAFTSPEOPLE WHO CREATE OUR ULTRA-PREMIUM LIFESTYLE COLLECTIONS.

FOLLEA'S BEST IN CLASS "EP" EUROPEAN HAIR.

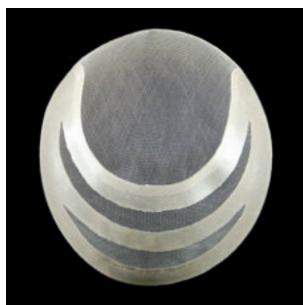
- GENTLY PROCESSED IN HOUSE IN SMALL BATCHES TO PROTECT THE NATURAL CHARACTER AND BEAUTY OF THE HAIR.
- FOLLEA'S EUROPEAN PONYTAIL, DOUBLE DRAWN FOR CONSISTENT HAIR LENGTH.

**AÉRO TA115**



MEDIUM SIZE BASE PICTURED

**AÉRO TA116**



LARGE SIZE BASE PICTURED

**AÉRO TA117**



X-LARGE SIZE BASE PICTURED

## Aéro TA115

AN ALL LACE CLIP IN TOPETTE® CROWN EXTENSION FOR COVERAGE OF EARLY STAGE DIFFUSE HAIR LOSS. A GREAT COMPANION TO STANDARD EXTENSIONS FOR MATCHING VOLUME AND LENGTH.

NOW AVAILABLE FROM BEVERLY HILLS STOCK.

- SEW-IN CLIPS ARE STANDARD. CAN BE EASILY REMOVED FOR USE WITH LACE TAPE OR OTHER ATTACHMENT METHODS.
- CHOOSE FROM ANY OF THE 13 TruLife™ PREFERRED COLOR-BLENDS.



8" (20 cm)

**MEDIUM BASE**

- 5" x 6" (12.7 x 15.2 cm)

**LARGE BASE**

- 6" x 7½" (15.2 x 19.1 cm)

(TOPETTE ONLY PICTURED)



14" (35 cm)

**MEDIUM BASE**

- 5" x 6" (12.7 x 15.2 cm)

**LARGE BASE**

- 6" x 7½" (15.2 x 19.1 cm)

(TOPETTE ONLY PICTURED)



# Aéro TA 116

A BONDABLE LACE TOPETTE® CROWN EXTENSION FOR COVERAGE OF EARLY TO MODERATE DIFFUSE HAIR LOSS.

- LACE CUTAWAY, SUITABLE FOR BONDING.
- CAN BE TRIMMED TO FIT A WIDE RANGE OF TEMPLATES.
- ¾" (19 MM) TRI-BAND POLY PERIMETER.
- FOR USE WITH ADHESIVE, TAPE, OR CLIPS.

NOW AVAILABLE FROM BEVERLY HILLS STOCK.

- CHOOSE FROM ANY OF THE 13 TruLife™ PREFERRED COLOR-BLENDS.



8" (20 cm)

**MEDIUM BASE**

- 5" x 6" (12.7 x 15.2 cm)

**LARGE BASE**

- 7" x 8" (17.8 x 20.3 cm)

(TOPETTE ONLY PICTURED)



14" (35 cm)

**MEDIUM BASE**

- 5" x 6" (12.7 x 15.2 cm)

**LARGE BASE**

- 7" x 8" (17.8 x 20.3 cm)

(TOPETTE ONLY PICTURED)

# Aéro TA 117

A LACE (WITH LACE FRONT) BONDABLE TOPETTE® CROWN EXTENSION FOR COVERAGE OF SEVERE DIFFUSE HAIR LOSS AND REPLICATION OF NATURAL HAIRLINE.

- LACE CUTAWAY, SUITABLE FOR PERIMETER BONDING.
- CAN BE TRIMMED TO FIT A WIDE RANGE OF TEMPLATES.
- ¾" (19 MM) POLY PERIMETER.
- FOR USE WITH ADHESIVE, TAPE, OR CLIPS.

NOW AVAILABLE FROM BEVERLY HILLS STOCK.

- CHOOSE FROM ANY OF THE 13 TruLife™ PREFERRED COLOR-BLENDS.



8" (20 cm)

**X-LARGE BASE**

- 9" x 10" (22.9 x 25.4 cm)

(TOPETTE ONLY PICTURED)



14" (35 cm)

**X-LARGE BASE**

- 9" x 10" (22.9 x 25.4 cm)

(TOPETTE ONLY PICTURED)

# Topette® Options Table

## Topette® Options

## Available in Which Follea Collections\*

STYLE NAME	LENGTH	LIFESTYLE-2 T100	AERO-2 TA115	AERO-2 TA116	AERO-2 TA117
<b>MEDIUM</b>	8" / 20 CM	-	YES	YES	YES
<b>MEDIUM-LONG</b>	10" / 25 CM	YES	-	-	-
<b>VERY LONG</b>	14" / 35 CM	YES	YES	YES	YES

\*ALL TOPETTE OPTIONS COME IN FOLLEA NATURAL DENSITY STANDARD & STRAIGHT WITH NATURAL BODY EUROPEAN HAIR.

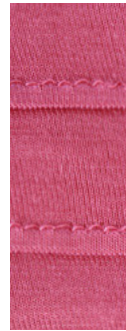
TA115/116/117 = LACE TOP

T100 = FRENCH TOP

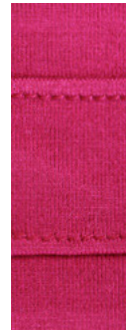
# Accessories

## Headwear

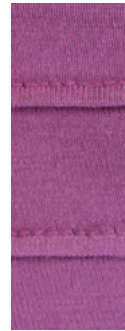
BAMBOO TURBANS.  
ONE SIZE FITS ALL.  
COLORS CURRENTLY IN  
STOCK ARE PICTURED.  
COLOR RANGE MAY  
VARY IN THE FUTURE.



PETAL  
PINK



CRANBERRY



LIGHT  
PURPLE



DARK  
PURPLE



NAVY  
BLUE



STREET  
BLUE



BLACK



HEATHER  
GREY

## Insta-Clips

AVAILABLE IN 4 COLORS.  
CHOOSE SMALL OR LARGE CLIPS.



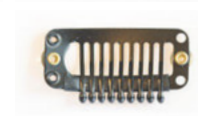
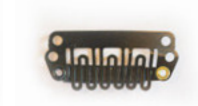
BEIGE



LIGHT BROWN



DARK BROWN



BLACK

FOLLEA INSTA-CLIPS GIVE YOU THE OPTION  
OF EITHER SEWING IN, OR TAPING ON.

WITH OUR POLY TAPE-ON MODELS YOU  
HAVE THE VERSATILITY OF CHANGING THE  
PLACEMENT OF YOUR CLIPS FOR A MORE  
SECURE HOLD AND TO QUICKLY REDUCE  
PULLING.

## PerfectCare™ Mannequin

FOR PROPER WASHING AND CARE OF OUR WIGS WE USE A  
RUBBERIZED PERFECT CARE MANNEQUIN.

YOUR FOLLEA MANNEQUIN INCLUDES A CLAMP ALLOWING  
YOU TO EASILY AND SAFELY STYLE YOUR FOLLEA.



# About Follea®

Follea® designs and creates Nature's Most Beautiful Hair™ using only the highest grades of hair and the gentlest processes attainable. All Follea hair is expertly handled by Follea artisans, according to our own proprietary know-how and technology.

Our trademark claim to "Nature's Most Beautiful Hair" is certified by leading hair specialists worldwide, yet we believe the true test is yours. We invite you to experience our hair for yourself: its look, feel, luster, lightness, style-ability & manageability. We know you'll find no better choice for natural, healthy, beautiful hair.

Nature's Most Beautiful Hair™ is exclusively available on Follea's wide range of lightweight Next Generation Wigs, Topette® Crown Extension Systems, and Extensions.

Only from Follea: the most beautiful hair collections in the world.

# Contact Follea®

## **FOLLEA BEVERLY HILLS, USA\***

Call 1-888-4-Follea / 1-888-436-5532

E-mail us at [info@follea.com](mailto:info@follea.com)

Visit us online at [www.follea.com](http://www.follea.com)

## **FOLLEA DEUTSCHLAND**

Telefon: +49 (0) 89 232 490 0

Fax: +49 (0) 89 232 490 199

E-mail: [info@follea.eu](mailto:info@follea.eu)

Web: [www.follea.de](http://www.follea.de)

## **FOLLEA UK**

Call +44 (0) 20 8908 3242

E-mail us at [hair@follea.co.uk](mailto:hair@follea.co.uk)

Visit us online at [www.follea.co.uk](http://www.follea.co.uk)

*\*For Follea service in countries not listed please contact Follea USA.*

# Legal Notices

Follea Catalog 2013/2014 US Version © 2013, 2014 Follea, Inc.

Last revised May 9, 2013. This replaces all previous versions.

Follea reserves the right to change specifications and prices without notice. This publication or any part of it may be reproduced for personal use only. Follea prohibits all commercial or derivative uses of this publication. Follea trademarks are used throughout this publication and although not all occurrences of Follea trademarks have a trademark symbol, all occurrences should be considered so protected. The information distributed in this publication is on an "As Is" basis, without warranty. While every precaution has been taken in the preparation of this publication, neither the author nor Follea shall have any liability to any person or entity with respect to any loss or damage caused or alleged to be caused directly or indirectly by the information contained herein.



# FOLLEA<sup>®</sup>

NATURE'S MOST BEAUTIFUL HAIR<sup>™</sup>